

LAVINA® V-32 Vacuum

Operating Manual

V-32-230 (230 Volt), V-32-400 (400 Volt) and V-32-480 (480 Volt)



Part of a complete system of LAVINA® vacuums and pre-separators.

Superabrasive, Inc - Home Office
9411 Jackson Trail Road, Hoschton, GA 30548, USA
Ph +1 (706) 658-1122 | Fax +1 (706) 658-0357

www.superabrasive.com | info@superabrasive.us
facebook.com/superabrasive | twitter.com/superabrasive
LAVINA® User's Group: linkedin.com/company/superabrasive-inc.

 **SUPERABRASIVE**



Table of Contents

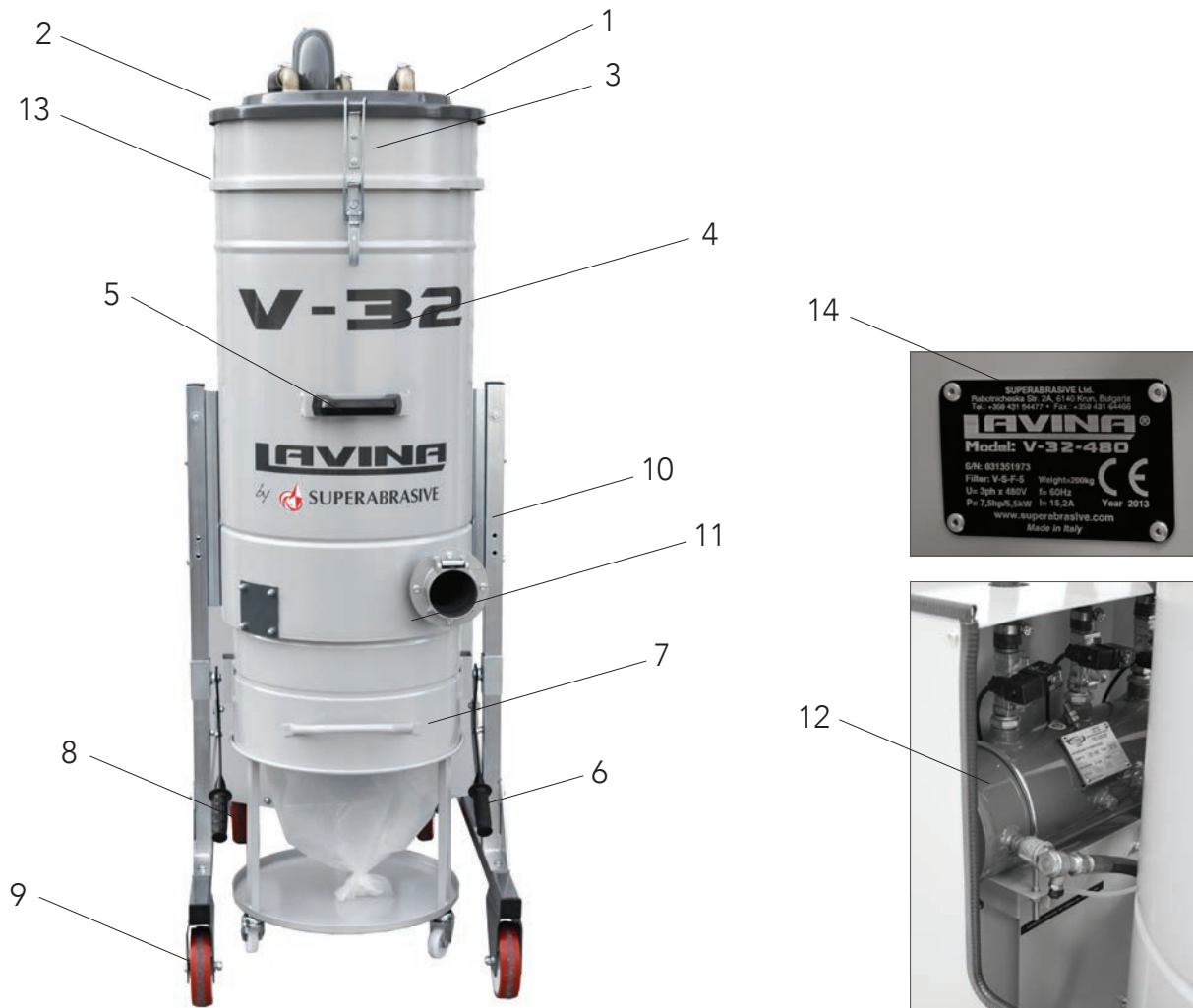
Main Components and Controls	3
Technical Data	4
Included, Replacement, and Optional Parts / Accessories	4
Safety Precautions	5
Operation	7
Waste Container Removal (Emptying the Dust)	8
Automatic Filter Cleaning System	8
Replacing the Air Filters	9
Installing the HEPA Filter / HEPA Filter Kit	10
Longopac® Replacement (Changing Bags)	11
Installing Longopac® Refill Packs	12
Maintenance	13
Troubleshooting	13
Recommended Spare Parts	15
Complete Parts List and Exploded Drawings	16
Sequencer Board Setting Instructions	22
Electrical Diagrams	23
Warranty and Returns	41
Handling, Transportation, and Storage	42
CE Certification	42
Disposal	42
Manufacturer Contact Information	42

Contact Superabrasive:

Technical Support: (800) 987-8403 | www.superabrasive.com | info@superabrasive.us

MAIN COMPONENTS AND CONTROLS

- | | | | |
|----|--|-----|----------------------------------|
| 1) | Top cover | 9) | Fixed wheel (2 total) |
| 2) | Vacuum gauge | 10) | Trolley frame |
| 3) | Latches (3 total) | 11) | Vacuum suction inlet |
| 4) | Filter chamber | 12) | Air compressor tank |
| 5) | Vacuum push/pull handle (front/rear) | 13) | Vacuum motor |
| 6) | Waste container release handle (2 total) | 14) | Dust Collector information plate |
| 7) | Removable waste container | | |
| 8) | Caster wheel (2 total: 1 locking) | | |



Contact Superabrasive:

Technical Support: (800) 987-8403 | www.superabrasive.com | info@superabrasive.us

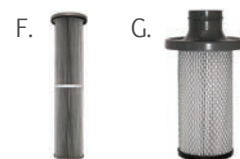
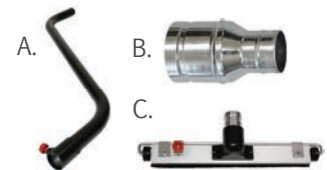
TECHNICAL DATA

	V-32-230	V-32-480
Voltage	3 ph x 230 V	3 ph x 480 V
Amperage	26.3 Amps	15.2 Amps
Power	7.2 + 2 HP	7.5 + 2 HP
Motor	1 blower vacuum	1 blower vacuum
Filter	3 cartridges	3 cartridges
Filter Surface	87 ft ²	87 ft ²
Filter Cleaning	compressor	compressor
CFM	354 CFM	354 CFM
Water Lift	125 Inch	125 Inch
Longopac®	yes	yes
Vac Hose Port	M88	M88
Cable Length	28.5 ft / 8.7 m	28.5 ft / 8.7 m
Weight	441 lbs	441 lbs



INCLUDED, REPLACEMENT, AND OPTIONAL PARTS

	Part Number	Description
Included:	V-A-50	(A) Aluminum Floor Wand (M50)
	V-S-C-3	(B) Steel Hose Connector (M60 to M88) Hose to Vacuum
	V-FB-50	(C) Dry Floor Brush (M50)
	V-H-P-8	(D) Polyurethane Anti-static Hose, 2 Rubber Cuffs (F60), 8 Meters (M60)
	V-SR-C-1	(E) Steel / Rubber Connector (M60 to F50), 2 Pieces
	V-SR-C-2	Steel / Rubber Connector (M60 to F76), 2 Pieces, 2 Clamps Hose to Machine (not pictured)
	V-S-F-5	(F) Air Filter Cartridge
Optional Parts:	V-S-H-1	(G) HEPA Filter
Longopac® Replacement	V-S-L-1	Replacement Longopac® (1 Refill Pack, 4 x 20mt bags)



Contact Superabrasive:

Technical Support: (800) 987-8403 | www.superabrasive.com | info@superabrasive.us

SAFETY PRECAUTIONS

RECOMMENDED USE

The LAVINA® V-32 Vacuum is designed and manufactured for use with concrete, terrazzo and natural stone floors. It is recommended for use with LAVINA® machines. This vacuum is rated for dry use only, and with a machine of appropriate size. For more information, please contact Superabrasive.

PROHIBITED USE

The vacuum MUST NOT be used:

- For applications different from those stated in this manual
- For non-suitable materials (asbestos or other toxic materials)
- In environments which (1) Possess the risk of explosion, (2) Possess high concentration of powders or oil substances in the air, (3) Possess the risk of fire, (4) Feature inclement conditions, (5) Possess electromagnetic radiation
- The vacuum should be not connected to electrical power when performing maintenance-related tasks

PREPARATION FOR WORK

Ensure that:

- You have closed the work area, so that no person unfamiliar with operating the vacuum can enter the area
- The vacuum is not missing parts
- The vacuum is in an upright, working position
- All protection devices are working properly
- The electrical cable is free to move and follow the vacuum easily. In order to keep the electrical cable from being damaged, no vehicle should enter the area where electrical cables are present.

ARREST FUNCTIONS

Functions for arresting of the machine include following:

- Button to stop the motor

SAFE USE

The LAVINA® V32 is designed to eliminate all potential risks associated with its use. However, accidents may occur if unskilled or uninstructed workers fail to heed the list of potential risks below:

- Position Risks due to operator's incorrect working position
- Tangling Risks due to wearing inappropriate working clothes
- Training Risks due to lack of operational training

NOTE: Machine operators should follow the instructions in the manual at all times.

RESIDUAL RISKS

During normal operating and maintenance cycles, the operator is exposed to some residual risks, which cannot be eliminated due to the nature of machine operation.

BEFORE YOU BEGIN

- The working area must be clear from any debris or objects.
- A first-time operator must always read the manual and heed all safety instructions.
- All electric connections and cables must be inspected for potential damage.
- Ground wire system of the power supply must be also inspected.
- Perform general daily inspections of the vacuum and inspect the vacuum before each use for any sign of damage.
- Inspect all safety devices.
- The vacuum/filters must be clean and the hose should be connected.

OPERATING THE VACUUM

When operating the LAVINA® 25-L, be sure that no one else is within close proximity to the vacuum. Never leave the vacuum unattended while working. The electrical cable and hose must move freely, be damage-free, and should never run beneath the vacuum or machine. Check the floor prior to beginning any work, and ensure that it's not too uneven, which can cause damage to the vacuum.

AFTER WORK IS COMPLETED

When work is complete, clean the vacuum and its surroundings sufficiently, empty all dust / debris, unplug the vacuum and wind up the electrical cable, secure the hose, and store the vacuum in a safe and secure place.

THE WORK AREA

Ensure that the area is free of unauthorized people or vehicles, secure all cables and hoses, and always check the floor for debris.

PERSONAL PROTECTIVE EQUIPMENT (PPE)

When operating the machine, always wear safety shoes, ear protectors, safety gloves (especially when changing tools), and suitable clothing. All persons within the immediate working area must wear safety glasses with side shields.

OPERATOR

The operator must be aware of the vacuum's work environment, be properly trained prior to operating the equipment, and fully understand this manual. Only one operator may work with the machine at a single time. The operator must understand and interpret all the drawings and designs in manual, understand all sanitation and safety regulations pertaining to its operation, have floor grinding experience, know how to perform in an emergency situation, and have an adequate technical knowledge and preparation.

Contact Superabrasive:

Technical Support: (800) 987-8403 | www.superabrasive.com | info@superabrasive.us

SAFETY PRECAUTIONS, Continued

- Superabrasive cannot predict all possible circumstances that could present a potential hazard. The warnings defined in this manual should not be considered completely inclusive of all hazardous situations.
- It is the responsibility of the employer or vacuum owner to train any personnel that will be operating the vacuum unit, while complying with all local laws and regulations.
- This specific vacuum cleaner has been designed for the vacuuming and collection of dusts and solid debris. This model is not intended for any other uses or applications.
- **IMPORTANT:** Only use specified filters applicable to the operation of this vacuum cleaner.
- To ensure efficient operation of the vacuum cleaner, it must be protected from extreme environmental conditions and elements. This may include rain, snow, hail, and airborne debris.
- The vacuum cleaner should only be operated in environments with a temperature between 41°F and 113°F (5°C to 45°C) and a maximum relative humidity of 70%.
- The work environment for the vacuum cleaner should be clean, well-lit, and free of combustible elements.
- Before the vacuum cleaner is connected to the power source, ensure that the electrical voltage and frequency is correct for your specific machine model.
- The vacuum cleaner should not be operated without the proper filters installed. This could possibly result in damage to the machine, and cause harm to surrounding personnel.
- Do not open the waste container or motor head assembly while the vacuum cleaner is operating.
- Do not vacuum any flammable materials or substances such as fuels, solvents, etc. A vacuum cleaner must be specifically designed and labeled for such operation. When grinding epoxy, first ensure that the epoxy is non-toxic.
- Do not vacuum any corrosive substances unless the vacuum cleaner is specifically outfitted with containers suitable for this purpose.
- Do not vacuum any burning, smoldering, or hot materials. This could result in a possible explosion and/or damage to the vacuum components.
- If toxic or harmful substances accidentally enter the vacuum cleaner, the container and filters must be removed and cleaned immediately using the proper protective equipment and safety procedures.
- When performing any type of maintenance procedures on the vacuum cleaner, be sure that the power switches are turned off and the power cable is disconnected from the power source. Utilize the locking caster wheel to prevent movement while work is being performed.
- Make sure the power cable is free from damage while operating the vacuum cleaner. If the power cable is found to be damaged, discontinue use of the vacuum and replace the power cable immediately.
- When moving the vacuum cleaner, never pull on the power cable or vacuum hose. For this purpose, always use the designated handles mounted on the machine.
- For this specific vacuum cleaner, sound tests indicate that the emitted noise level is measured at a maximum of 76 decibels (dBA), for a distance of 1 meter from the machine (and height of 1.60 meters). The vibrations emitted from the machine have been measured at a maximum value of 2.5 m/s².
- **CAUTION:** The National Institute for Occupational Safety and Health (NIOSH) recommends that exposure to noise in the working environment be maintained below a level equivalent to 85 dBA for a period of eight hours, in order to minimize occupational, noise-induced hearing loss. Any persons working in proximity of the vacuum cleaner should wear the proper hearing protection in order to prevent hearing loss. Please refer to you local laws and regulations for further information on the matter.
- When storing the vacuum cleaner, the filter should be removed and cleaned, and the waste container should be emptied of debris. Store the vacuum cleaner in temperatures between 32°F and 104°F (0°C and 40°C). Cover the vacuum cleaner in order to protect it from accumulating debris and/or environmental elements.

Contact Superabrasive:

Technical Support: (800) 987-8403 | www.superabrasive.com | info@superabrasive.us

OPERATION

IMPORTANT: Before connecting the power cord to the power source, ensure that the electrical voltage corresponds with the requirements identified on the information plate on the vacuum cleaner.

Make sure that the flexible vacuum hose is securely attached to the vacuum pipe union and vacuum cleaner inlet. Inspect the power cable (and extension cords) for any signs of wear or damage. Replace if necessary. Toggle the motor switches to the "1" position to turn on the motors, and "0" position to turn them off.

CAUTION: Before switching the vacuum cleaner motors "on," always make ensure that they are at a complete rest before energizing. Also, before connecting the power supply, be sure the "start" switches are down.



Emergency Stop Button:

In emergency situations, the emergency stop button can be used to deactivate the vacuum cleaner. If the "stop suction" button does not respond when pressed, the emergency stop button can also be used.

Thermal Release Indicator:

This indicator will illuminate when the circuit breaker(s) for the air compressor and/or vacuum motor has tripped. If the vacuum cleaner has stopped and the indicator is illuminated, it will be necessary to inspect the machine and reset the circuit breaker(s) before the vacuum motor can be re-energized. Please refer to the "Troubleshooting" section for further information.

Locking Caster Wheel:

Of the 2 caster wheels located on the rear of the dust collector, one of the wheels may be locked. Locking the wheel will prevent the vacuum from moving, and possibly causing damage or injury. The wheel should be locked on uneven surfaces to prevent unexpected rolling or movement. To lock the caster wheel, follow the procedure shown below.

- To lock the caster wheel, press down on the metal tab labeled "STOP."
- To unlock the caster wheel, press backwards on the metal tab protruding from the top of the wheel assembly.

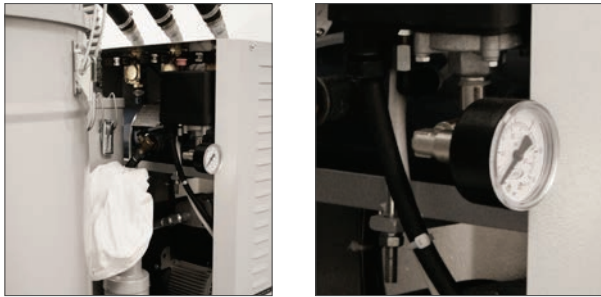


Contact Superabrasive:

Technical Support: (800) 987-8403 | www.superabrasive.com | info@superabrasive.us

VACUUM GAUGE

There is a vacuum gauge dial located on the side of the vacuum cleaner.



The vacuum gauge indicator must always remain less than 2000 mm H₂O while the vacuum cleaner is in operation.

CAUTION: If the vacuum gauge indicator remains at a reading greater than 2000 mm H₂O, even after cleaning the filter, a blockage is mostly likely present. Clean the vacuum hose and/or accessories of any blockages. Do not operate the vacuum cleaner until the clog is removed.

CAUTION: While operating the vacuum cleaner, it is important to avoid extreme twisting, rolling, or bending of the vacuum hose. This could result in damage to the vacuum motors.

WASTE CONTAINER REMOVAL (EMPTYING THE DUST)

To empty the waste, first turn off all of the vacuum motors and disconnect the power cable from the power source. Then, simultaneously lift both of the waste container release handles.



Use the attached waste container handle to move the waste container from beneath the vacuum cleaner.

IMPORTANT: When performing any work or maintenance on the waste container, a respirator should be worn in order to prevent the inhalation of airborne dust and particles.

To reinstall the waste container, perform the previous steps in reverse order.

AUTOMATIC FILTER CLEANING SYSTEM

The LAVINA® V-32 Vacuum Cleaner is fitted with an automatic, reverse-pulse, filter cleaning system. The system operates based on a blowing frequency that is controlled by the timer settings. Please refer to page 16 for additional information regarding the automatic filter cleaning system (shown to the right).



Contact Superabrasive:

Technical Support: (800) 987-8403 | www.superabrasive.com | info@superabrasive.us

REPLACING THE AIR FILTER

To replace the vacuum filters, follow the procedures listed below:

IMPORTANT: All of the following procedures must be performed with the vacuum cleaner turned off and the power cable disconnected from the power source. Before performing any work or maintenance on the vacuum cleaner, be sure to wear the proper protective equipment (clothing, eye protection, and/or gloves).

- In order to prevent movement of the vacuum cleaner, place the locking caster wheel in the “stop” position. - Fig 1
- Loosen the hose clamps and remove the 4 hoses attached to the top cover. - Fig 2
- Release all of the latches securing the top cover assembly. - Fig 3



Fig 1



Fig 2



Fig 3

Refer to Figure 4 below for the remaining steps.

- Remove the top cover assembly and spacer ring below it, and set the pieces aside.
- Remove the center nut and 3 grounding straps from the threaded rod..
- Remove the 9 bolts that secure the filter cartridge retaining disc.
- Remove the filter cartridge retaining disc and set it aside.
- Remove the 3 old filters and install the new ones (Fig 5)
- Perform the previous steps in the reverse order for reassembly of the vacuum cleaner. Be sure to reinstall all of the grounding straps when reassembling the vacuum.



Fig 4

filter clamp brackets

hose clamp

air jet hoses

filter



Fig 5:
Replacement
Ait Filter
Cartridge

IMPORTANT: The used filters and debris must be disposed of using the proper methods. Please contact your local, environmental agency for information pertaining to your local laws and regulations.

Contact Superabrasive:

Technical Support: (800) 987-8403 | www.superabrasive.com | info@superabrasive.us

INSTALLING THE HEPA FILTER / HEPA FILTER KIT

To install the HEPA filter kit (or filter), refer to the procedure listed below (see Fig 6 for a photo of the filter and kit):

IMPORTANT: All of the following procedures must be performed with the vacuum cleaner turned off and the power cable disconnected from the power source. Before performing any work or maintenance on the vacuum cleaner, be sure to wear the proper protective equipment (clothing, eye protection, and/or gloves).

- In order to prevent movement of the vacuum cleaner, place the locking caster wheel in the “stop” position (Fig 7).
- Locate the HEPA filter container located at the rear of the vacuum cleaner
- Release the 2 latches that secure the diffuser filter bag and top cover (Fig 8).
- Install the HEPA filter into the container (Fig 9).
- Reinstall the top cover and secure the 2 latches on the HEPA filter container.

Important: The used filters must be disposed of using the proper methods. Please contact your local environmental agency for information pertaining to your local laws and regulations.



Fig 6



Fig 7



Fig 8

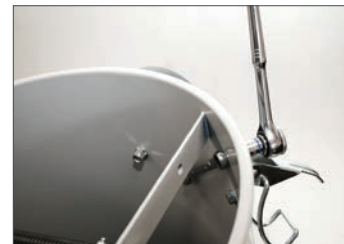


Fig 9

Contact Superabrasive:

Technical Support: (800) 987-8403 | www.superabrasive.com | info@superabrasive.us

LONGOPAC BAG REPLACEMENT (CHANGING BAGS)

Deactivate all vacuum motors by placing the power switches in the OFF position.

IMPORTANT: Disconnect the electrical plug from the power source.

- Make sure that there is approximately 6-8 inches of an empty bag located between the bottom of the dust container and the top of the debris/waste.
- Install 2 zip ties, or cable ties, around the plastic bag: 1 located above the top of the debris/waste, and a 2nd tie located approximately 3-4 inches higher up on the bag). Both ties must be securely tightened in order to prevent the opening of the bag and possible spillage.
- Using a sharp knife or scissors, cut across the entire section of plastic bag located between the 2 zip ties, or cable ties. Remove and dispose of the bag section containing the dust and debris.
- Pull down on the bag until the end reaches the lower, bag-support plate.

IMPORTANT: When disposing of bags containing debris, be sure to use waste disposal containers and methods that fully comply with all environmental laws and regulations that are applicable to your specific country and location.



Contact Superabrasive:

Technical Support: (800) 987-8403 | www.superabrasive.com | info@superabrasive.us

INSTALLING LONGOPAC REFILL PACKS

When the plastic bag cartridge has reached the end, the plastic bag refill may be installed using the following procedures:

- Locate the 2 retaining levers located underneath the Longopac bag support ring (Fig 13).
- First pull down on the retaining levers, then rotate them 180 degrees so that the ends are pointing towards the center of the machine (Fig 14).



Fig 13



Fig 14



Fig 15

- Pull down on the bag support ring to remove, and place aside on a level surface.
- Place the Longopac bag refill into the support ring. Ensure that the 2 ends of the refill are directed in an upwards position. Pull the inner end of bag refill down over the inside surface of the bag support ring (Fig 15).



Fig 16



Fig 17



Fig 18

- Lift the bag support ring into place so that the bottom is located above the bottom edge of the hopper container (Fig 16).
- Rotate the 2 retaining levers 180 degrees so that the ends are pointing outward and holding the bag support ring in place (Fig 17).
- Pull the outer edge of the bag down over the support ring until a zip tie, or cable tie, can be installed all the way around the bag.
- After the zip tie has been securely installed, pull the bag down until the end reaches the lower, bag-support plate. The vacuum cleaner is now ready for operation (Fig 18).

Contact Superabrasive:

Technical Support: (800) 987-8403 | www.superabrasive.com | info@superabrasive.us

MAINTENANCE

IMPORTANT: All of the following procedures must be performed with the vacuum cleaner turned off and the power cable disconnected from the power source. Before performing any work or maintenance on the vacuum cleaner, be sure to wear the proper protective equipment (clothing, eye protection, and/or gloves).

- In order to ensure safe and efficient operation of the vacuum cleaner, the following procedures should be performed periodically (depending on the frequency of operation):
- Remove and inspect the filters for any signs of excessive wear or damage. Replace as necessary. (See section on “Filter Removal”).
- Ensure that the sealing gaskets on the motor head assembly, filters or assemblies, and waste container are free of excessive wear or damage. Replace as necessary.
- Inspect all electrical components (switches, plugs, cables, etc.) for damage or exposed wiring. Replace as necessary.
- Ensure that all screws, bolts, and nuts are properly tightened.
- Check the waste container level. Always clean and empty the container when the debris reaches a maximum of 75% of its full capacity.
- Check the flexible vacuum hose and accessories for significant wear or damage. If holes are present, the vacuum cleaner’s efficiency will be reduced, and debris will leak into the work environment.

IMPORTANT: All major repair work should be performed by Superabrasive or an authorized repair facility.

VACUUM MOTOR SERVICING

During the life of the vacuum motor, the carbon brushes inside the motor may be replaced once. These brushes are considered to be a ‘wear part’ and their replacement is not covered under the vacuum warranty. For additional information, please contact Superabrasive, or an authorized service facility.

TROUBLESHOOTING

Vacuum Issue or Symptom	Possible Cause	Corrective Action
The vacuum fails to start or operate.	There is insufficient power being supplied to the vacuum.	Check the electrical cable, plug, and connections for possible damage.
	The electrical circuit breaker or GFI (Ground Fault Interrupter) has tripped.	Reset the circuit breaker or GFI device(s).
Dust is leaking from the vacuum during operation.	There are holes or cracks present in the vacuum hose or tools.	Check the vacuum hose and tools for holes or cracks. Replace if necessary.
	There are holes present in the filter(s).	Remove the filter(s) from the vacuum and inspect for holes or tears. Replace if necessary.
	The vacuum seals are misaligned or damaged.	Make sure all rubber and foam seals are installed and aligned properly. Replace if any visible damage is present.
The vacuum does not operate efficiently, or has weak suction power.	The vacuum hose has an obstruction or holes present.	Check the hose for obstructions and clear them as necessary. Replace the hose if visible holes are present.
	The vacuum dust container/bag is full.	Empty the container, or replace the Longopac® section of bag filled with dust and debris.
	The vacuum filter(s) has excessive blockage.	Activate the filter shaker lever to clean the filter (while the vacuum is turned off). Replace if necessary.
The motor(s) are making excessive noise.	The motor(s) is damaged.	Contact Superabrasive or an authorized service facility.

Contact Superabrasive:

Technical Support: (800) 987-8403 | www.superabrasive.com | info@superabrasive.us

MAINTENANCE

AUTOMATIC FILTER CLEANING SYSTEM

The automatic filter cleaning system utilizes an air compressor. In order to ensure efficient operation of the system, routine maintenance of the air compressor should be performed. This includes the intake air filter, compressor oil, and air tank. See the table below for the recommended service intervals for system maintenance.

MAINTENANCE SCHEDULE

	Daily	After First 100 Hours	Every 100 hours	Every 300 Hours
Clean or replace intake air filter			✓	
Drain and refill compressor oil		✓		✓
Check oil level	✓			
Drain condensate from air compressor tank	✓			

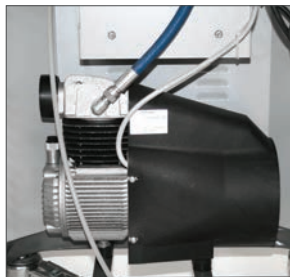
In order to access the air compressor for maintenance, the waste container of the vacuum cleaner should be removed. After the waste container is removed, the compressor can be accessed from the front of the machine (Fig 19).

Intake Air Filter: At a minimum, the intake air filter should be cleaned and inspected every 100 hours, or more frequently, depending on working conditions. If the air filter becomes damaged, it should be discarded and replaced with a new air filter. The air filter assembly is located on the top side of the air compressor. In order to remove the air filter, the center bolt needs to be removed using an Allen wrench (Fig 20, 21). The cover plate and air filter can then be removed. After the air filter has been thoroughly cleaned, the air filter and cover plate can then be reinstalled.

Compressor Oil: The compressor oil level should be checked on a daily basis. When the oil reservoir is properly filled, the oil line shown at the sight glass should intersect the red dot in the window (Fig 22). The sight glass can be seen through the cover of the vacuum cleaner, towards the bottom of the machine (Fig 23).

If the oil level is above or below the mark, add or remove oil in order to adjust it to the correct level. The compressor oil should be drained and refilled after the first 100 hours of operation. All subsequent oil changes should then be performed for every 300 hours of operation. The recommended oil type for the compressor is API CC/SC SAE 40 (for cold climates, API CC/SC SAE 20 can be used). The drain plug for the compressor oil is located just below the oil level sight glass. It can be removed using an Allen wrench. **NOTE:** Used compressor oil must be disposed of using methods that fully comply with all local laws and regulations.

Air Tank: After a period of operation, condensate can accumulate in the air tank which should be removed via the drain valve located on the bottom side of the air tank. The drain valve should be opened in order to allow condensate to drain out of the tank (before and after operation) on a daily basis (Fig 24). When there is no longer any condensate coming out of the tank, the drain valve can be returned to the closed position (Fig 25).



Contact Superabrasive:

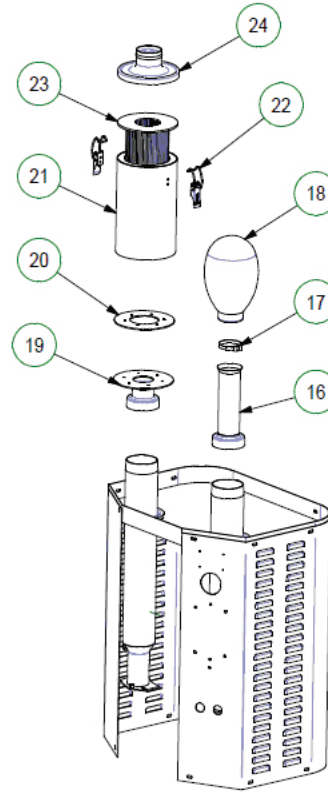
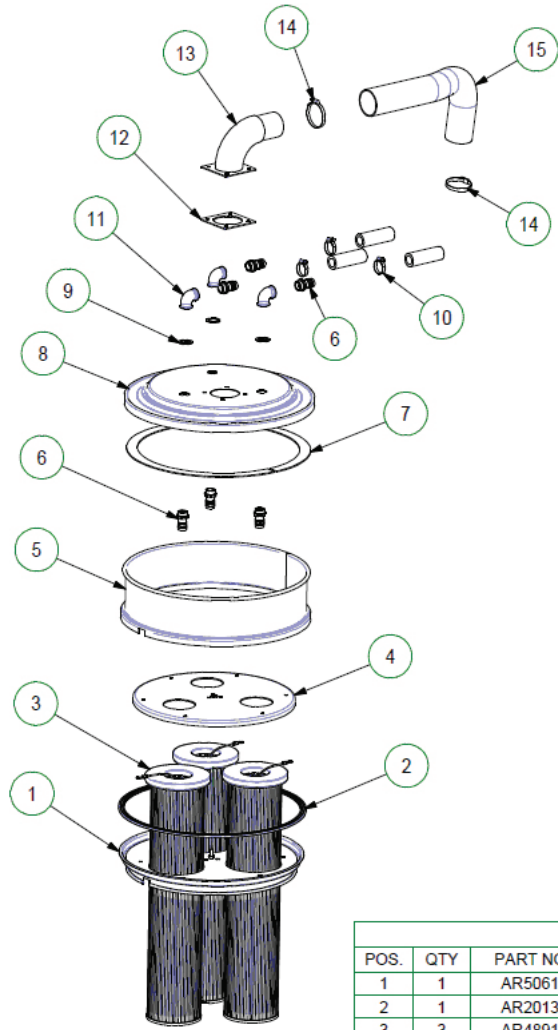
Technical Support: (800) 987-8403 | www.superabrasive.com | info@superabrasive.us

RECOMMENDED SPARE PARTS

DESCRIPTION	PART #
Air Filter Cartridge (3 per vacuum)	V-S-F-5
HEPA Filter	V-S-H-1
Diffuser Filter Bag	V-D-F-1
Gasket, Motor Head	V-G-3
Gasket, Waste Container	V-G-4
Latch	AR2523
Spare Longopac® (1 Refill Pack, 4 X 20 mt. bags)	V-S-L-1

Contact Superabrasive:

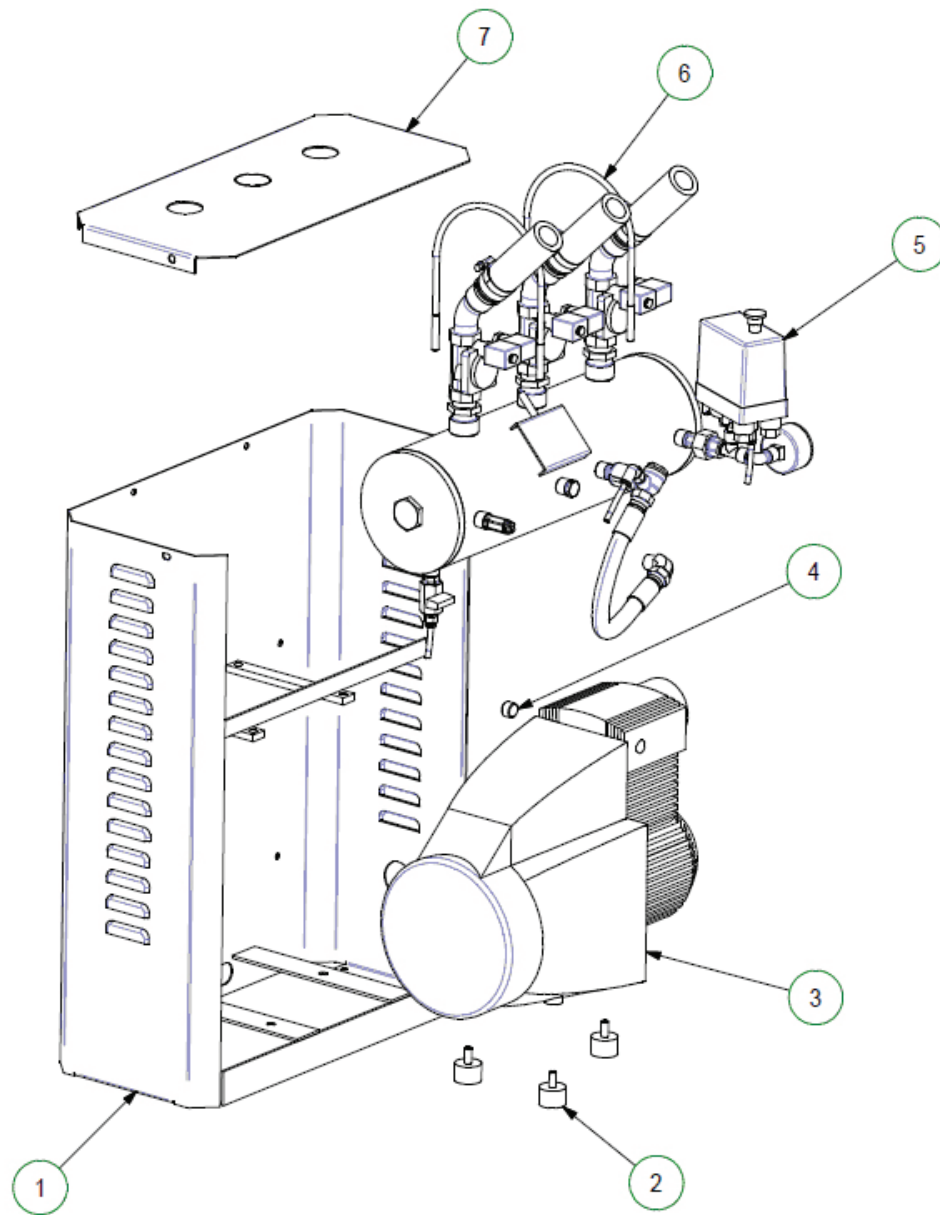
Technical Support: (800) 987-8403 | www.superabrasive.com | info@superabrasive.us



Parts List			
POS.	QTY	PART NO	DESCRIPTION
1	1	AR5061	D500 HOLDER DISK FOR 3 D150 CARTRIDGES
2	1	AR2013	D. 500 FILTER GASKET
3	3	AR4891	D150 H700 ANTISTATIC FILTER CARTRIDGE
4	1	AR5224	D500 FASTENING DISK FOR 3 D150 CARTRIDGES
5	1	AR2487	D. 500 H120 HEIGHTENING RING
6	6	AR4844	G3/4 -D25 STRAIGHT BRASS HOSE CONNECTOR
7	1.7 m	AR4273	3X30 ADHESIVE MOUSSE GASKET
8	1	AR5063	D. 525 COVER (2 CARTRIDGES PNEUMATIC)
9	3	AR4798	3/4 FIBER GASKET
10	3	AR2519	D. 25/35 CLAMP
11	3	AR4941	F/F 3/4" BEND CONNECTION
12	1	AR2286	D. 80 INLET GASKET
13	1	AR3986	D. 70 RSCH BENT INLET
14	2	AR4115	D. 50/70 CLAMP
15	1 m	AA1112	D. 70 POLYURETHANE HOSE
16	1	AR5290	D90/60 H200 CONNECTION WITH FLARING
17	1	AR3597	9x357POL.12 M802 BLACK CLAMP
18	1	AR3276	NYLON DIFFUSOR FILTER
19	1	AR5289	D90/60 SILENCER PIPE CONNECTION WITH D167 FLANGE
20	1	AR4000	DG RSCH D. 167 CONTAINER FILTER GASKET
21	1	AR4001	D. 167 DG RSCH SAFETY FILTER CONTAINER
22	2	AR4002	DG RSCH SAFETY FILTER CLOSING HOOK
23	1	AR4003	DG RSCH SAFETY FILTER
24	1	AR4004	D167 DG RSCH BOTTOM PLATE

Contact Superabrasive:

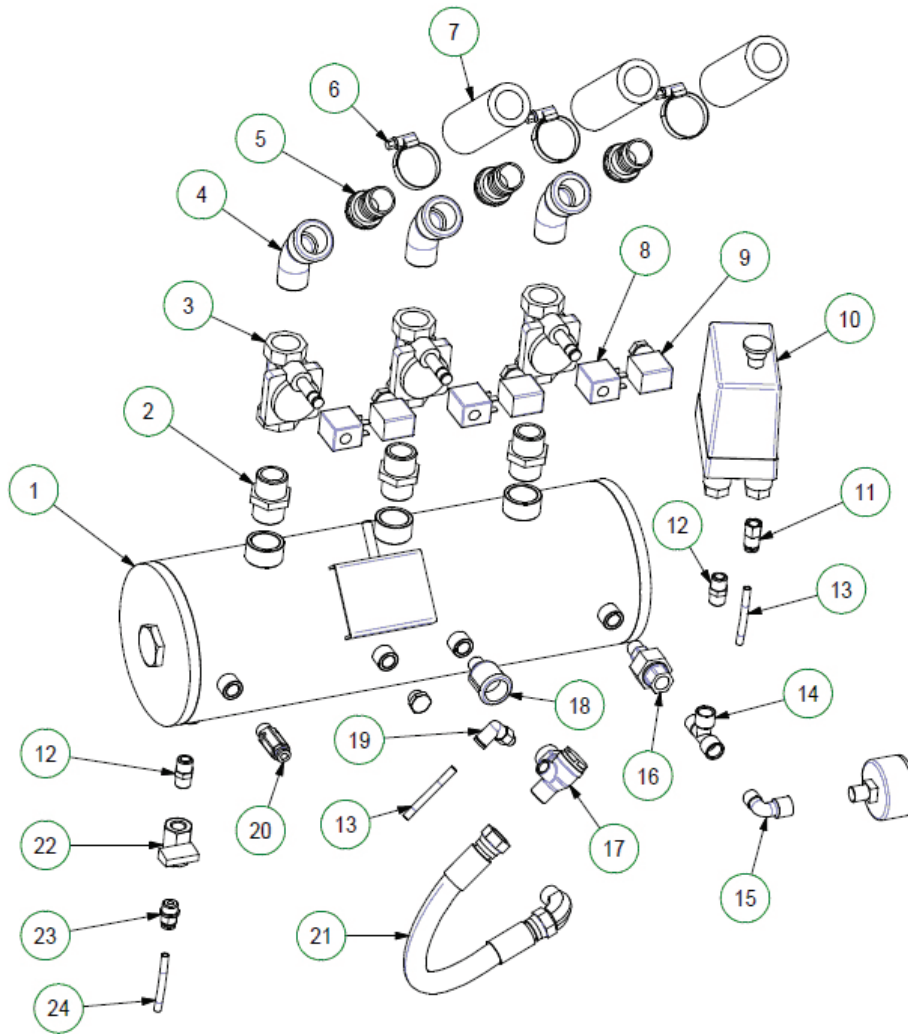
Technical Support: (800) 987-8403 | www.superabrasive.com | info@superabrasive.us



Parts List			
POS.	QTY	PART NO	DESCRIPTION
1	1	AR4848	TANK AND COMPRESSOR SIDE CASING
2	3	AR4799	D30x20 M8 MF ANTIVIBRATION DEVICE
3	1	AR4753	2HP 400V TRF AIR COMPRESSOR PUMP
4	1	AR4958	R3/8 M HEXAGON SOCKET CAP
5	1	-	TANK WITH COMPRESSOR KIT
6	2	AR4852	U-SHAPED 5" PIPE BRACKET
7	1	AR4847	TANK UPPER CASING

Contact Superabrasive:

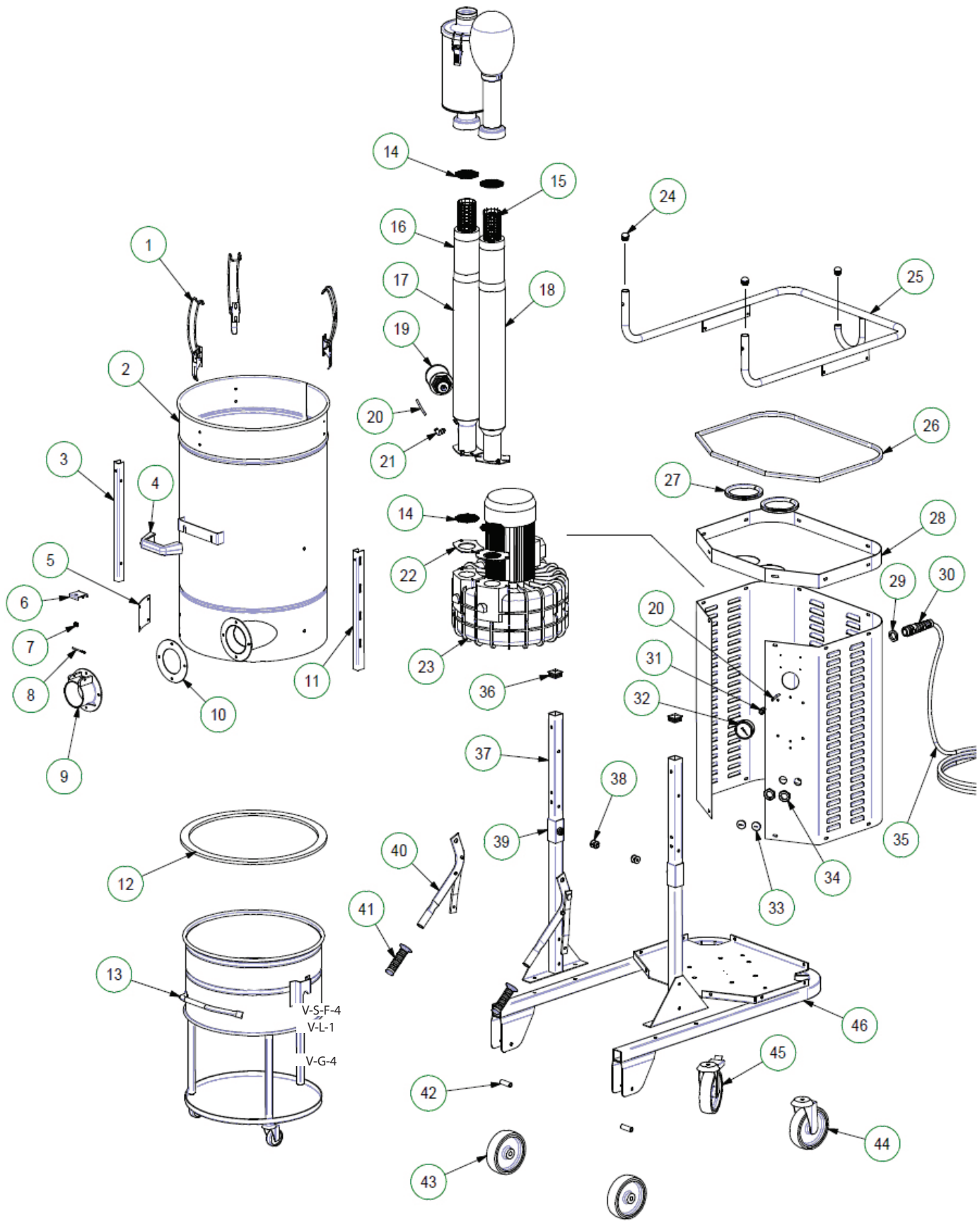
Technical Support: (800) 987-8403 | www.superabrasive.com | info@superabrasive.us



Parts List			
POS.	QTY	PART NO	DESCRIPTION
1	1	AR4842	D120 - 3 OUTLETS AIR TANK
2	3	AR4862	R3/4 NIPPLE
3	3	AR4857	G3/4 FF NC ELECTRIC VALVE
4	3	AR5072	R3/4 - G3/4 MF 45° BEND CONNECTION
5	3	AR4844	G3/4 -D25 STRAIGHT BRASS HOSE CONNECTOR
6	3	AR2519	D. 25/35 CLAMP
7	3x1 m	AR3744	10BAR D25 RUBBER PIPE
8	3	AR4858	24 Vac ELECTRIC VALVE COIL
9	3	AR4859	ELECTRIC VALVE CONNECTOR
10	1	AR4754	1-10 BAR ADJUSTABLE PRESSURE SWITCH FOR COMPRESSOR PUMP
11	1	AR3314	F 1/8 D6 STRAIGHT AIR PIPE COUPLING CONNECTION
12	2	AR3909	R1/4 NIPPLE
13	1	AR3898	D. 6 RILSAN PIPE
14	1	AR4953	G1/4 FF- R1/4 M TEE CONNECTION
15	1	AR5280	R1/4" - G1/4" MF ELBOW CONNECTION
16	1	AR5277	MF 1/4" CONNECTION FITTING
17	1	AR5238	R3/4 - G3/4 MF 45° BEND CONNECTION
18	1	AR5279	R3/4 - G3/4 MF 45° BEND CONNECTION
19	1	AR3342	G1/8M - D6 SWIVEL ELBOW PUSH-IN FITTING
20	1	AR4755	1/4 SAFETY VALVE
21	1	AR5237	3/8FF BLUE PIPE WITH NIPPLE AND CM30 BEND FOR COMPRESSOR
22	1	AR4049	G1/4 FF SMALL BALL VALVE
23	1	AR5281	M 1/4"-D6 STRAIGHT PUSH-IN FITTING
24	1	AR3898	D. 6 RILSAN PIPE

Contact Superabrasive:

Technical Support: (800) 987-8403 | www.superabrasive.com | info@superabrasive.us



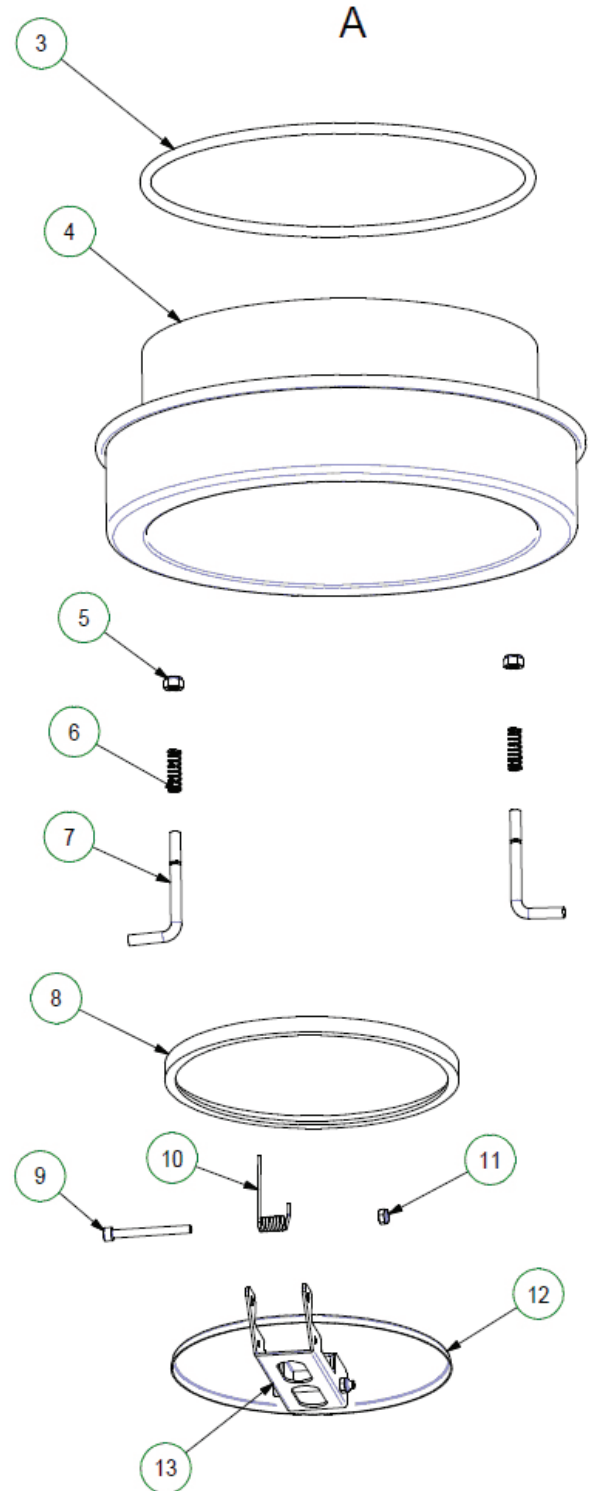
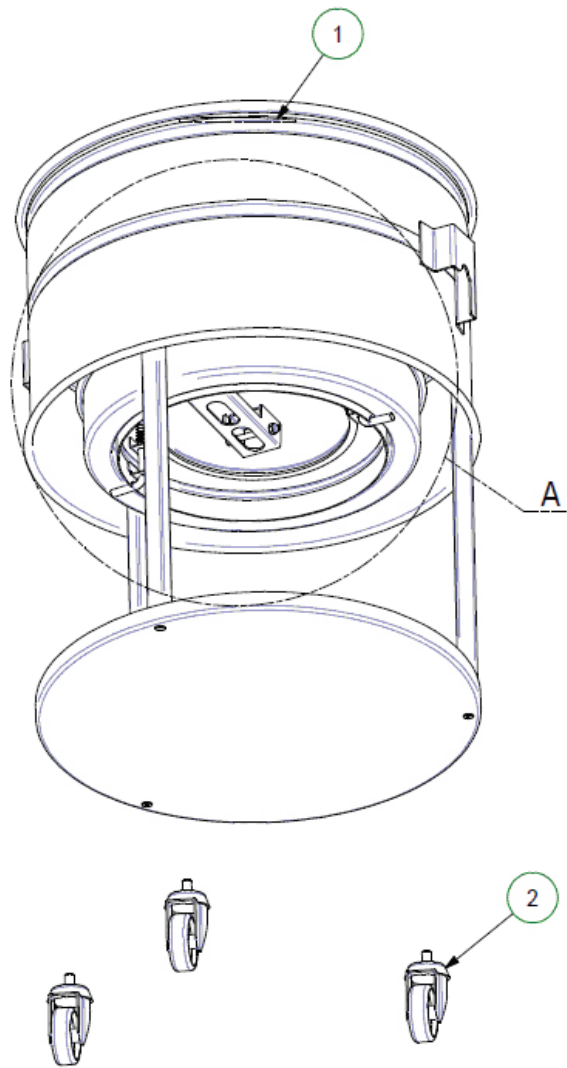
Contact Superabrasive:

Technical Support: (800) 987-8403 | www.superabrasive.com | info@superabrasive.us

Parts List			
POS.	QTY	PART NO	DESCRIPTION
1	3	AR2523	ABSOLUTE FILTER SPRING CLOSING HOOK
2	1	AR3731	D. 500 H850 FILTER CHAMBER WITH D. 100 FLANGED TANGENTIAL INLET
3	1	AR2086	D. 500 CHAMBER LEFT "U" PROFILE
4	1	AR2001	L=140 HANDLE
5	1	AR3346	FILTER SHAKER FLANGE
6	1	AR2418	DIE CAST INLET PAWL
7	1	AR2417	PAWL SPRING
8	1	AR2416	DIE CAST INLET PAWL PIN
9	1	AR3880	D. 80 DIE-CAST FLAT INLET
10	1	AR2414	D. 80 DIE-CAST INLET GASKET
11	1	AR2087	D. 500 CHAMBER RIGHT "U" PROFILE
12	1	AR4274	10X30 ADHESIVE GASKET
13	1	-	LONGOPAC KIT
14	4	AR2098	ES FLANGE NET FOR D90 PIPE
15	2	AR3424	D. 60 H535 GRID PIPE
16	2	AR4222	NOISE BUFFERING MATERIAL FOR PIPE D90 H650
17	1	AR3417-FD	D. 90 H650 SILENCER PIPE
18	1	AR3417-F	D. 90 H650 SILENCER PIPE
19	1	AA1190	1"1/2 PRESSURE RELIEF VALVE
20	2	AR3898	D. 6 RILSAN PIPE
21	2	AR3342	G1/8M - D6 SWIVEL ELBOW PUSH-IN FITTING
22	2	AR2099	ES MJ FLANGE GASKET
23	1	AR4447	SLR KW 4 V230/400/50/60 Hz IP55 SUCTION UNIT
24	3	AR4143	D. 25 HEAD COVER
25	1	AR2303NT	EXPORT-TS PUSH HANDLE
26	1	AR3173	SLIGEER GASKET
27	2	AR3173	SLIGEER GASKET
28	1	AR2428NT	EXPORT UPPER COVER PLATE
29	1	AR4235	PG 21 BLACK POLYAMIDE NUT
30	1	AR4298	PG21 D.9/16 CABLE FASTENER
31	1	AR4308	G1/4 F D6 STRAIGHT PUSH-IN FITTING
32	1	AR4144	D.60 0-6000 mm H2O VACUUM GAUGE
33	2	AR4835	M25X1,5 THREADED CAP
34	2	AR4297	M25x1,5 POLYAMIDE NUT
35	1	AR3370	4G2,5 H07RNF POWER SUPPLY CABLE
36	2	AR2051	35X35 SQUARE HEAD COVER
37	2	AR2088	DM3/ZFR75/EXP COLUMN
38	2	AR2363	FASTENING LEVER FULCRUM
39	2	AR3373	ZFR 100-101 SLIDER
40	1	-	LEVER SYSTEM
41	2	AR2008	FILTER SHAKER LEVER KNOB
42	2	AR2288/CEB	AR2288 WHEEL AXLE KIT
43	2	AR2288	D. 150 PU WHEEL
44	1	AR3449	D. 150 PU CASTOR (WITH HOLE)
45	1	AR3450	D. 150 PU CASTOR WITH BRAKE (WITH HOLE)
46	1	AR2301	EXPORT TROLLEY

Contact Superabrasive:

Technical Support: (800) 987-8403 | www.superabrasive.com | info@superabrasive.us

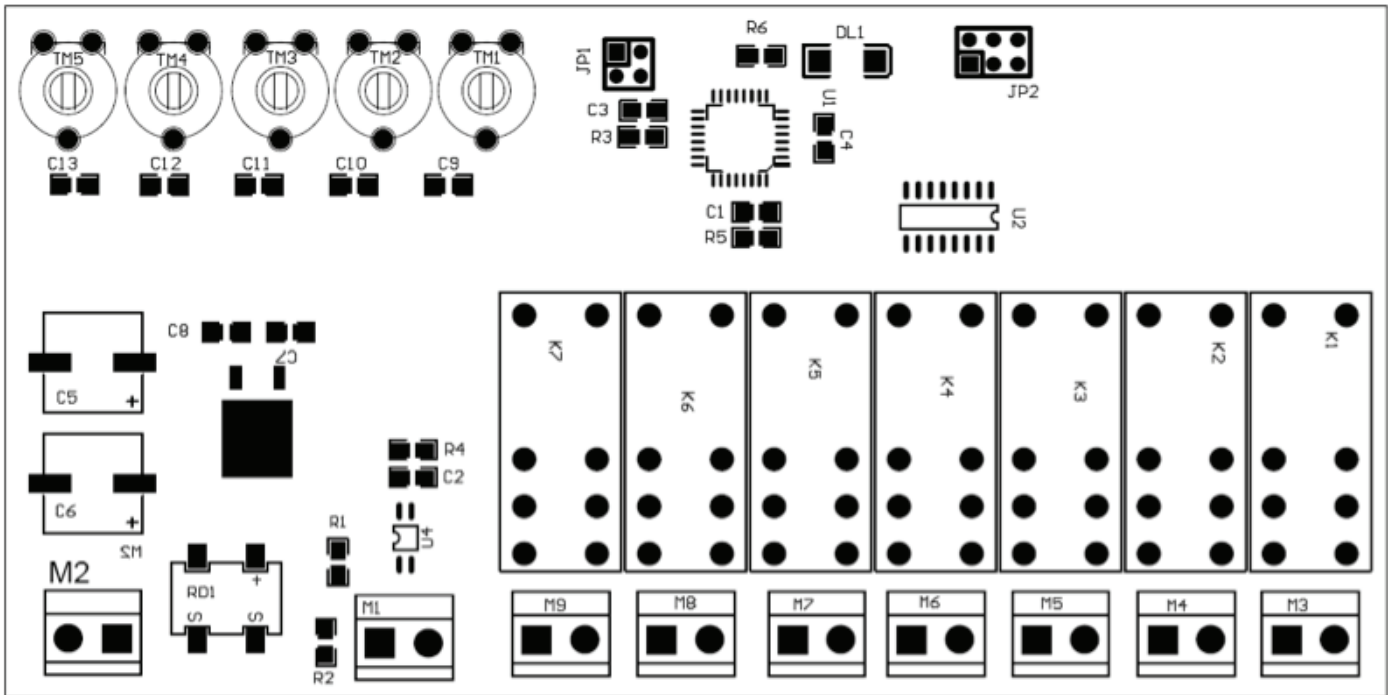


Parts List			
POS.	QTY	PART NO	DESCRIPTION
1	1	AR5347	Ø450 CPL HOPPER FOR LONGOPAC® DISCHARGE SYSTEM
2	3	AR2062	D. 60 NYLON CASTOR
3	1	AR5329	D8 D280 OR (LONGOPAC®)
4	1	AR5333	CONTAINER (LONGOPAC®)
5	2	Z10005	M8 LOCKNUT
6	2	AR5336	REGULATION SPRING FOR DISCHARGE FLAP (LONGOPAC®)
7	2	AR5334	CONTAINER BRACKET (LONGOPAC®)
8	1	AR5330	FLAP GASKET (LONGOPAC®)
9	1	-	M6x60 ISO 4762
10	1	AR5331	SPRING (LONGOPAC®)
11	2	-	M6 LOCKNUT
12	1	AR5335	Ø220 FLAP (LONGOPAC®)
13	1	AR5332	FLAP ARM (LONGOPAC®)v

Contact Superabrasive:

Technical Support: (800) 987-8403 | www.superabrasive.com | info@superabrasive.us

SEQUENCER BOARD SETTING INSTRUCTIONS



WORK CYCLE

1. With the start signal, usually linked to the suction motor start, the compressor starts running and filling the primary air tank
2. After a delay period, the solenoid valve moves to open position, allowing the secondary air tank filling.
3. After another delay period, the cartridge cleaning cycle starts, marked by a lamp on the electric panel door.
4. When the start signal goes off, usually when the suction motor is turned off, the cleaning continues for one or two complete cycles.
5. When the final cleaning session is completed, the compressor is turned off, the secondary tank solenoid valve moves to closed position, and the 'cleaning cycle' indicating lamp is switched off. It's then possible to cut the electric panel power supply.

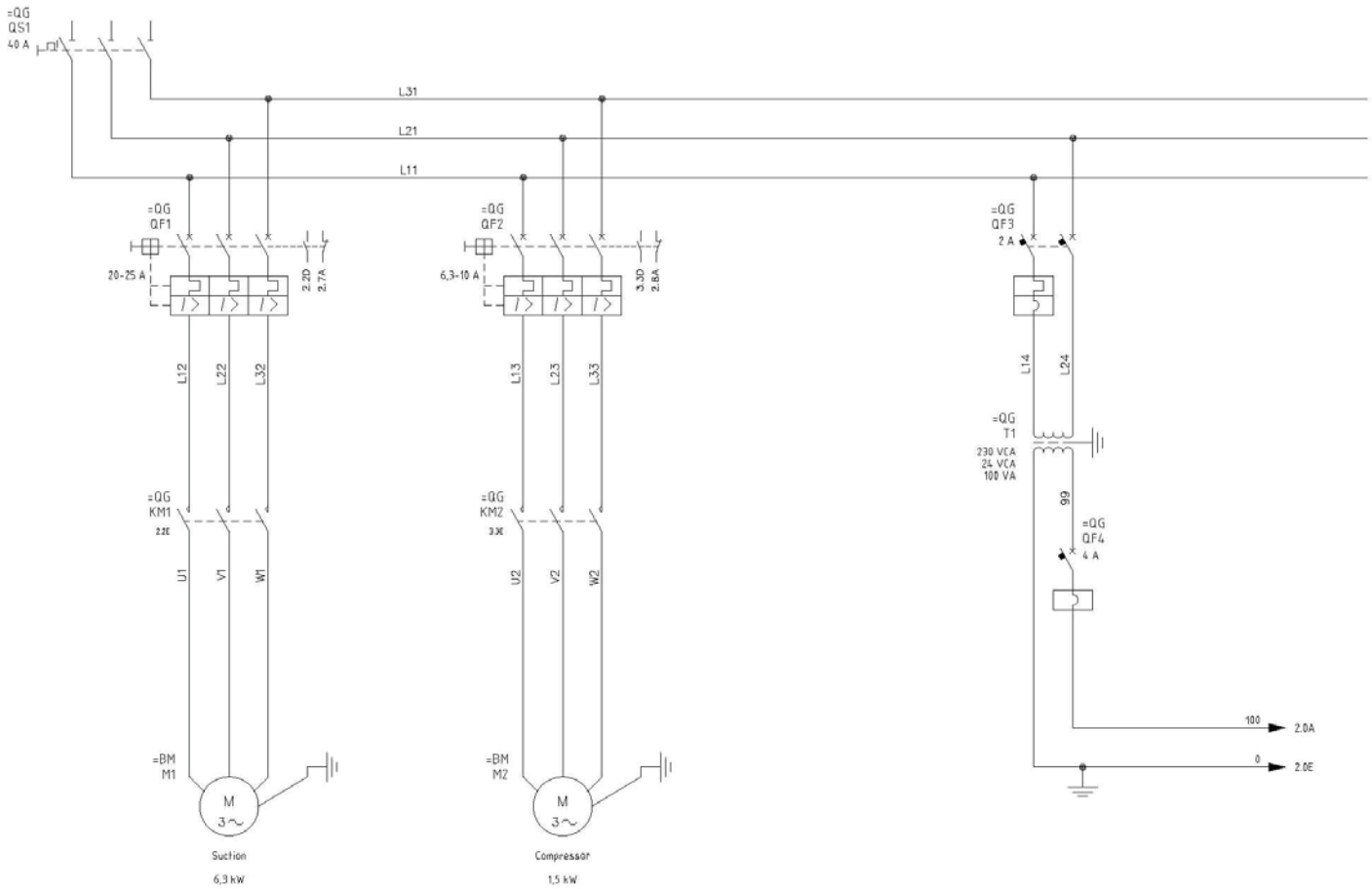
TIMER SETTINGS

Timer	Time	Standard Setting	Function
TM2	0 + 4 minutes	1 minute	delay between one blow and the next
TM1	-	mid-scale	- mid-scale: one cycle final cleaning - full-scale: two cycle final cleaning

Contact Superabrasive:

Technical Support: (800) 987-8403 | www.superabrasive.com | info@superabrasive.us

ELECTRICAL DIAGRAMS V-32-230, 230 Volt

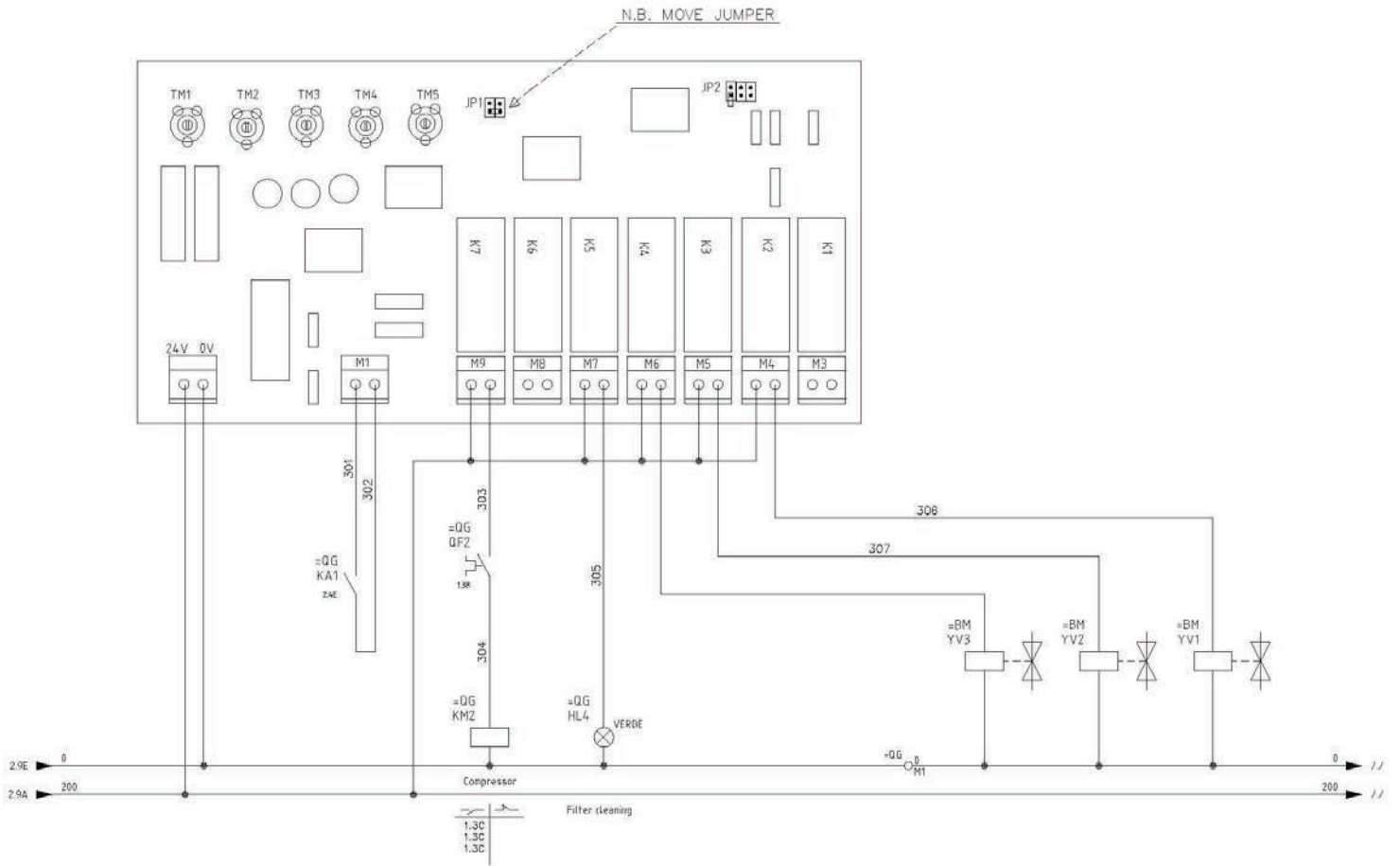


Contact Superabrasive:

Technical Support: (800) 987-8403 | www.superabrasive.com | info@superabrasive.us

ELECTRICAL DIAGRAMS

V-32-230, 230 Volt



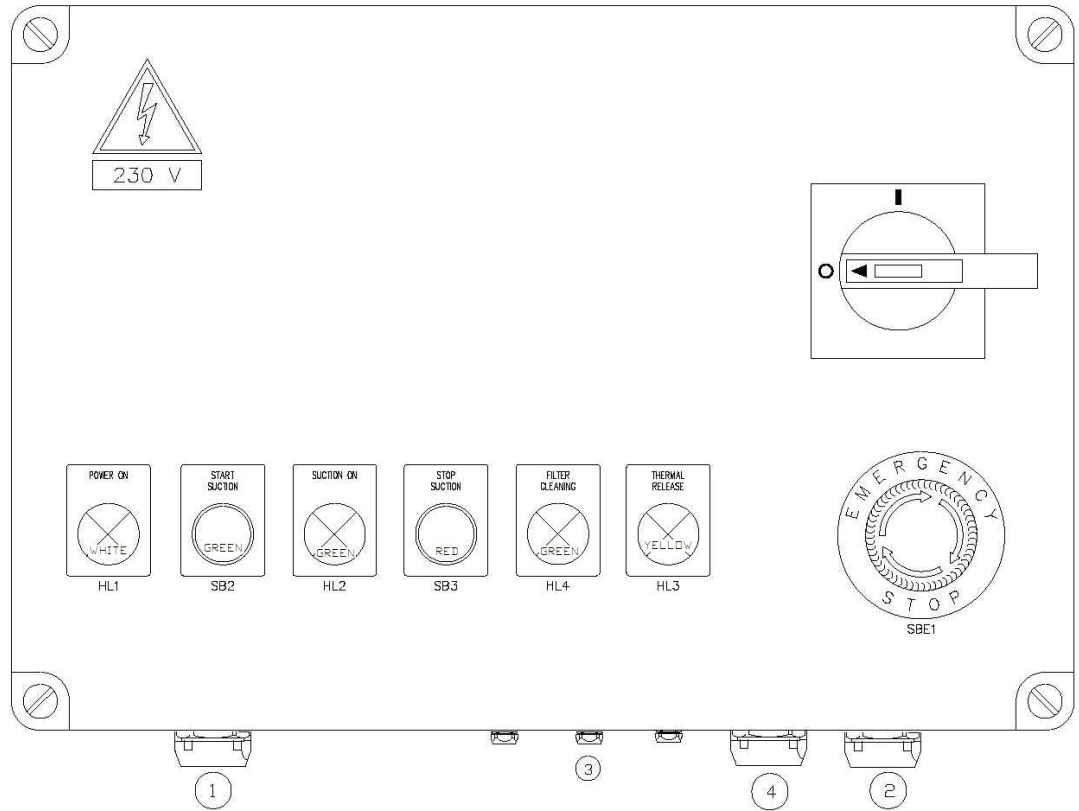
Contact Superabrasive:

Technical Support: (800) 987-8403 | www.superabrasive.com | info@superabrasive.us

ELECTRICAL DIAGRAMS V-32-230, 230 Volt

- 1- Power cable CVH07RNF 4G6 l=10.000 mm PG21
- 2- Vacuum motor cable CVH07RNF 4G4 l=2.300 mm PG21
- 3- Solenoid valve cables: "YV1-YV2-YV3" - CVNP100_2x0,5_l=1.300 mm PG9
- 4- Compressor cable CVH07RNF 4G1,5 l=1.300 mm PG16

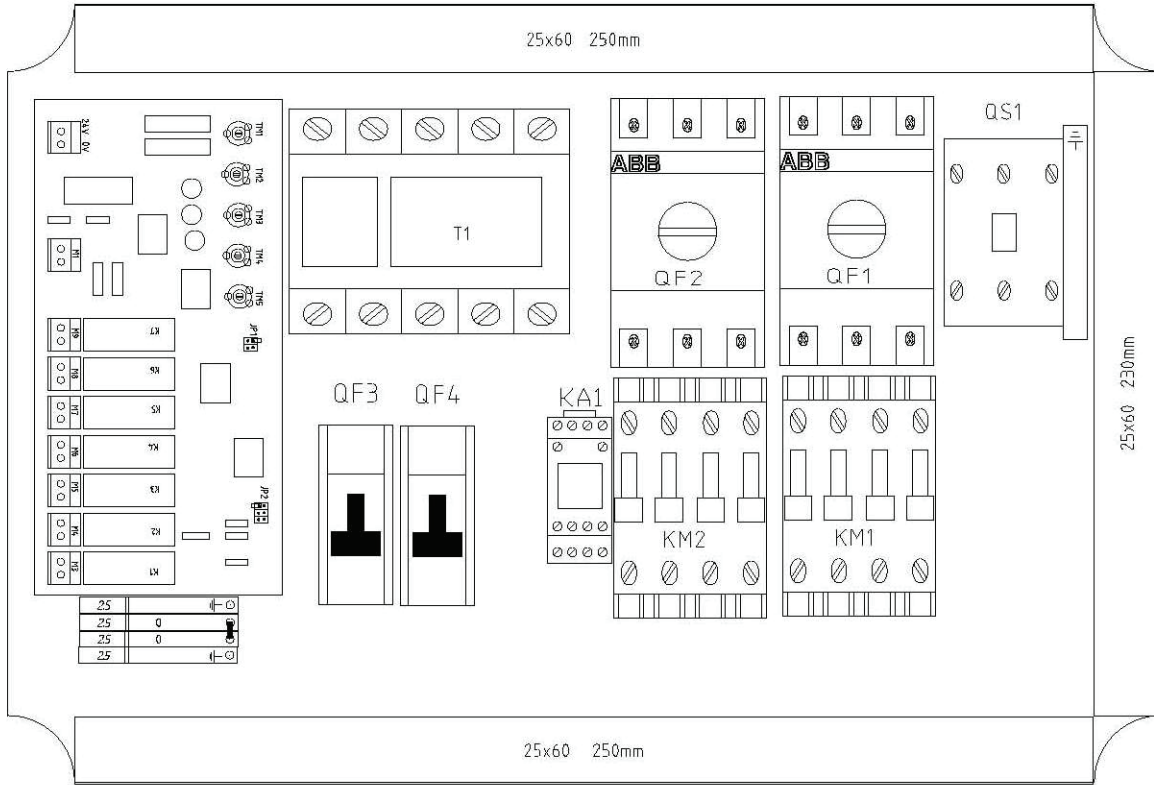
=QG
QG



Contact Superabrasive:

Technical Support: (800) 987-8403 | www.superabrasive.com | info@superabrasive.us

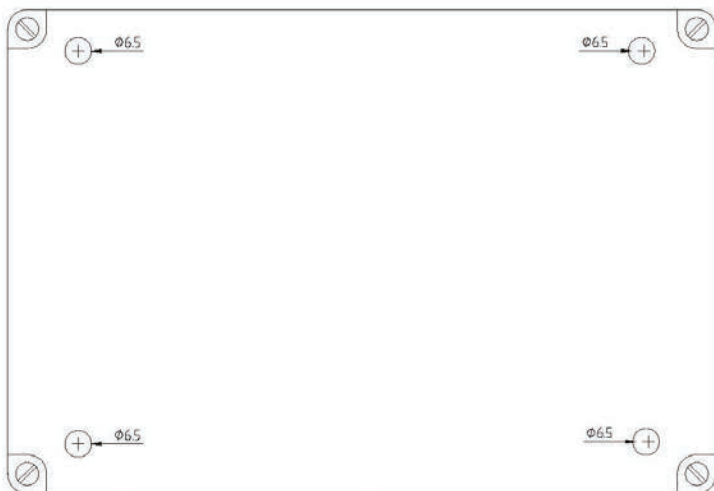
ELECTRICAL DIAGRAMS
V-32-230, 230 Volt



Contact Superabrasive:

Technical Support: (800) 987-8403 | www.superabrasive.com | info@superabrasive.us

ELECTRICAL DIAGRAMS V-32-230, 230 Volt



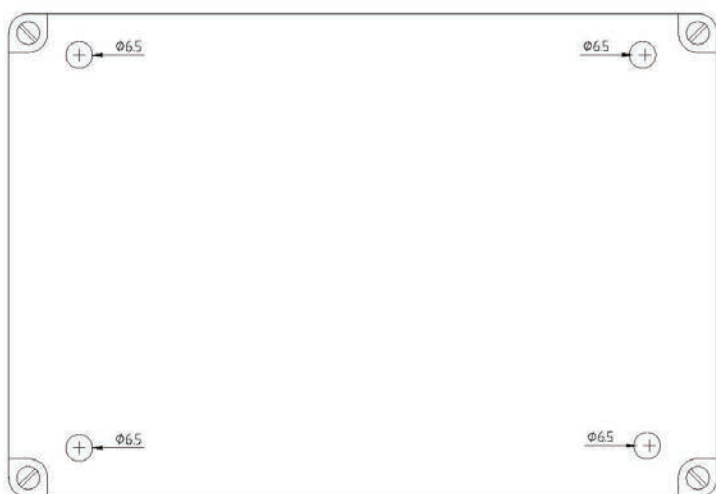
N° 4 BOLT 6MAX25 FOR ATTACHMENT ON THE PREPARED HOLES ON THE BOTTOM OF THE BOX.

Nome/Item	Tipo/Type	Descrizione/Description	Quadro/Board	Fg/Sh	Q.ta/Q.ty
HL1	ER 481 2	CL-502W LED INTEGRATO BIANCO 24VAC/CC	=QG	2	1
HL2	ER 478 8	CL-502G LED INTEGRATO VERDE 24VAC/CC	=QG	2	1
HL3	ER 479 6	CL-502Y LED INTEGRATO GIALLO 24VAC/CC	=QG	2	1
HL4	ER 478 8	CL-502G LED INTEGRATO VERDE 24VAC/CC	=QG	3	1
KM1	EN 080 6	AF26-30-10 24V/50-60HZ CONTATTORI SERIE A	=QG	2	1
KM2	EN 611 8	AS12-30-10 24V/50-60HZ CONTATTORI SERIE			1
QF1	EP 887 2 EP 095 2	MS132 20-25A INTERRUTTORE SALVA MOTORE HKF1-11 CONTATTO AUSILIARE FRONTALE 1NA+1NC	=QG =QG	3 1	1 1
QF2	EP 090 3 EP 095 2	MS116 6,30-10A INTERRUTTORE SALVAMOTORE HKF1-11 CONTATTO AUSILIARE FRONTALE 1NA+1NC	=QG	1	1 1
QF3	EE 550 8	S941N C 2 INTERRUTTORE AUTOMAT. 4,5KA 1P+N			1
QF4	EE 551 6	S941N C 4 INTERRUTTORE AUTOMAT. 4,5KA 1P+N	=QG	1	1
QG	GW44210	CASSETTA IP56 PARLISCE 380X300X120	=QG	1	1
QS1	EE 260 4 EE 313 1 EE 320 6	OT40F3 SEZIONATORE 40A OHYS2AJ MANIGLIA OXS6X85 ALBERO Ø5MM	=QG =QG	4 1	1 1 1
SB2	ER 001 8	CP1-10G-10 PUL.INS.VERDE G.PLAS.NERA 1NA			1
SB3	ER 014 1	CP1-10R-01 PUL.INS.ROSSO G.PLAS.NERA 1NC	=QG	2	1
SBE1	ER 694 0	CE4T-10R-01 EMER.MONOBLOCCO ROTATIVO 1NC	=QG	2	1
T1	14 TRSMS10012F	Trasformatore 230-400/12-0-12V 100VA	=QG	2	1
KA1	405280240000	MINIRELE' 24V AC	=QG	1	1

Contact Superabrasive:

Technical Support: (800) 987-8403 | www.superabrasive.com | info@superabrasive.us

ELECTRICAL DIAGRAMS V-32-230, 230 Volt



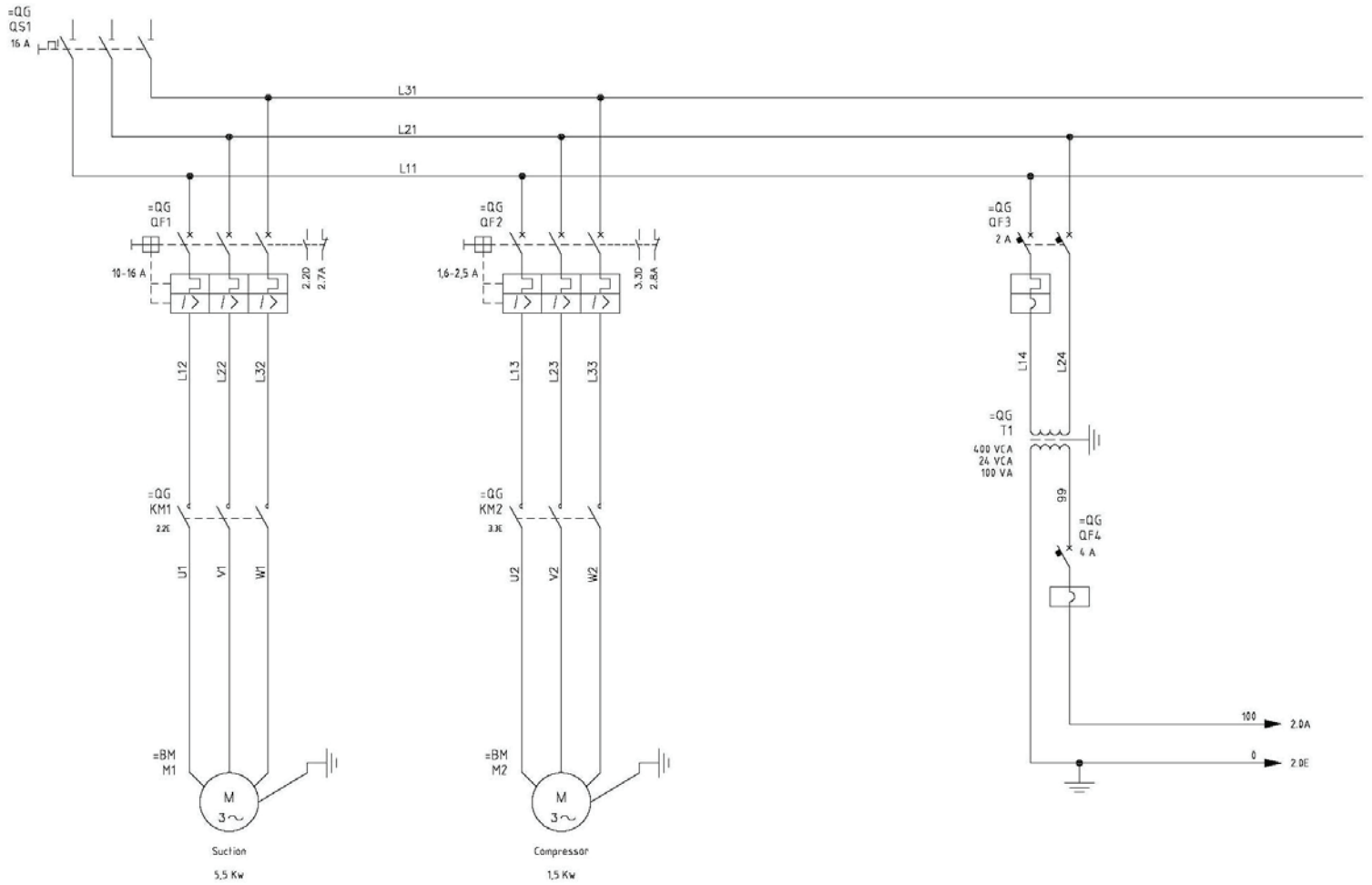
N° 4 BOLT 6MAX25 FOR ATTACHMENT ON THE PREPARED HOLES ON THE BOTTOM OF THE BOX.

Nome/Item	Tipo/Type	Descrizione/Description	Quadro/Board	Fq/Sh	Q.ta/Q.ty
HL1	ER 481 2	CL-502W LED INTEGRATO BIANCO 24VAC/CC	=QG	2	1
HL2	ER 478 8	CL-502G LED INTEGRATO VERDE 24VAC/CC	=QG	2	1
HL3	ER 479 6	CL-502Y LED INTEGRATO GIALLO 24VAC/CC	=QG	2	1
HL4	ER 478 8	CL-502G LED INTEGRATO VERDE 24VAC/CC	=QG	3	1
KM1	EN 080 6	AF26-30-10 24V/50-60HZ CONTATTORI SERIE A	=QG	2	1
KM2	EN 611 8	AS12-30-10 24V/50-60HZ CONTATTORI SERIE			1
QF1	EP 887 2 EP 095 2	MS132 20-25A INTERRUTTORE SALVA MOTORE HKF1-11 CONTATTO AUSILIARE FRONTALE 1NA+1NC	=QG =QG	3 1	1 1
QF2	EP 090 3 EP 095 2	MS116 6,30-10A INTERRUTTORE SALVAMOTORE HKF1-11 CONTATTO AUSILIARE FRONTALE 1NA+1NC	=QG	1	1 1
QF3	EE 550 8	S94-1N C 2 INTERRUTTORE AUTOMAT. 4,5KA 1P+N			1
QF4	EE 551 6	S94-1N C 4 INTERRUTTORE AUTOMAT. 4,5KA 1P+N	=QG	1	1
QG	GW44210	CASSETTA IP56 PAR.LISCHE 380X300X120	=QG	1	1
QS1	EE 260 4 EE 313 1 EE 320 6	OT40F3 SEZIONATORE 40A OHYS2AJ MANIGLIA DXS6X05 ALBERO Ø5MM	=QG =QG	4 1	1 1 1
SB2	ER 001 8	CP1-10G-10 PUL.INS.VERDE G.PLAS.NERA 1NA			1
SB3	ER 014 1	CP1-10R-01 PUL.INS.ROSSO G.PLAS.NERA 1NC	=QG	2	1
SBE1	ER 694 0	CE4T-10R-01 EMER.MONOBLOCCO ROTATIVO 1NC	=QG	2	1
T1	14 TRSMS10012F	Trasformatore 230-400/12-0-12V 100VA	=QG	2	1
KA1	40528024.0000	MINIRELE' 24V AC	=QG	1	1

Contact Superabrasive:

Technical Support: (800) 987-8403 | www.superabrasive.com | info@superabrasive.us

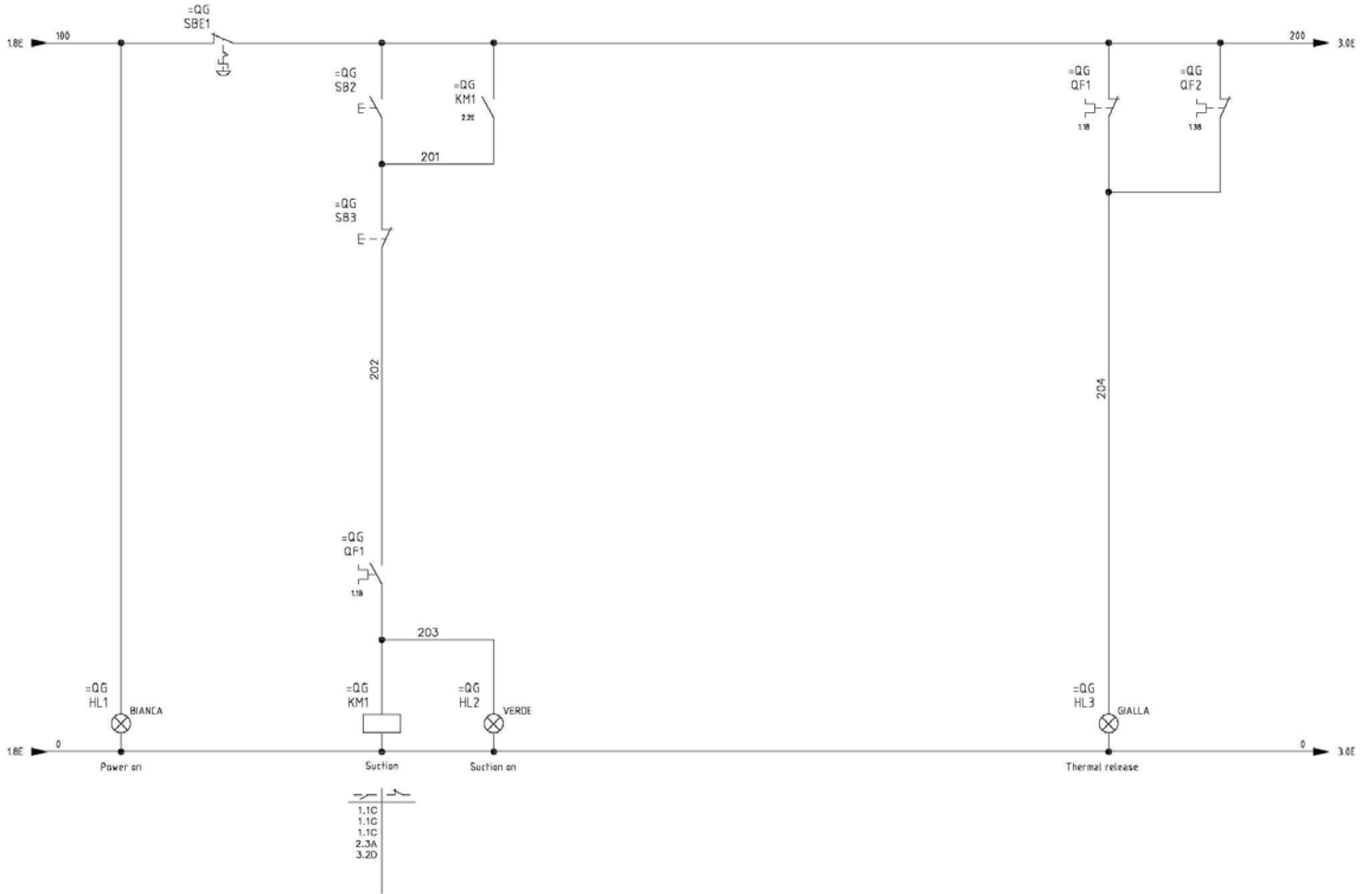
ELECTRICAL DIAGRAMS V-32-400, 400 Volt



Contact Superabrasive:

Technical Support: (800) 987-8403 | www.superabrasive.com | info@superabrasive.us

ELECTRICAL DIAGRAMS V-32-400, 400 Volt

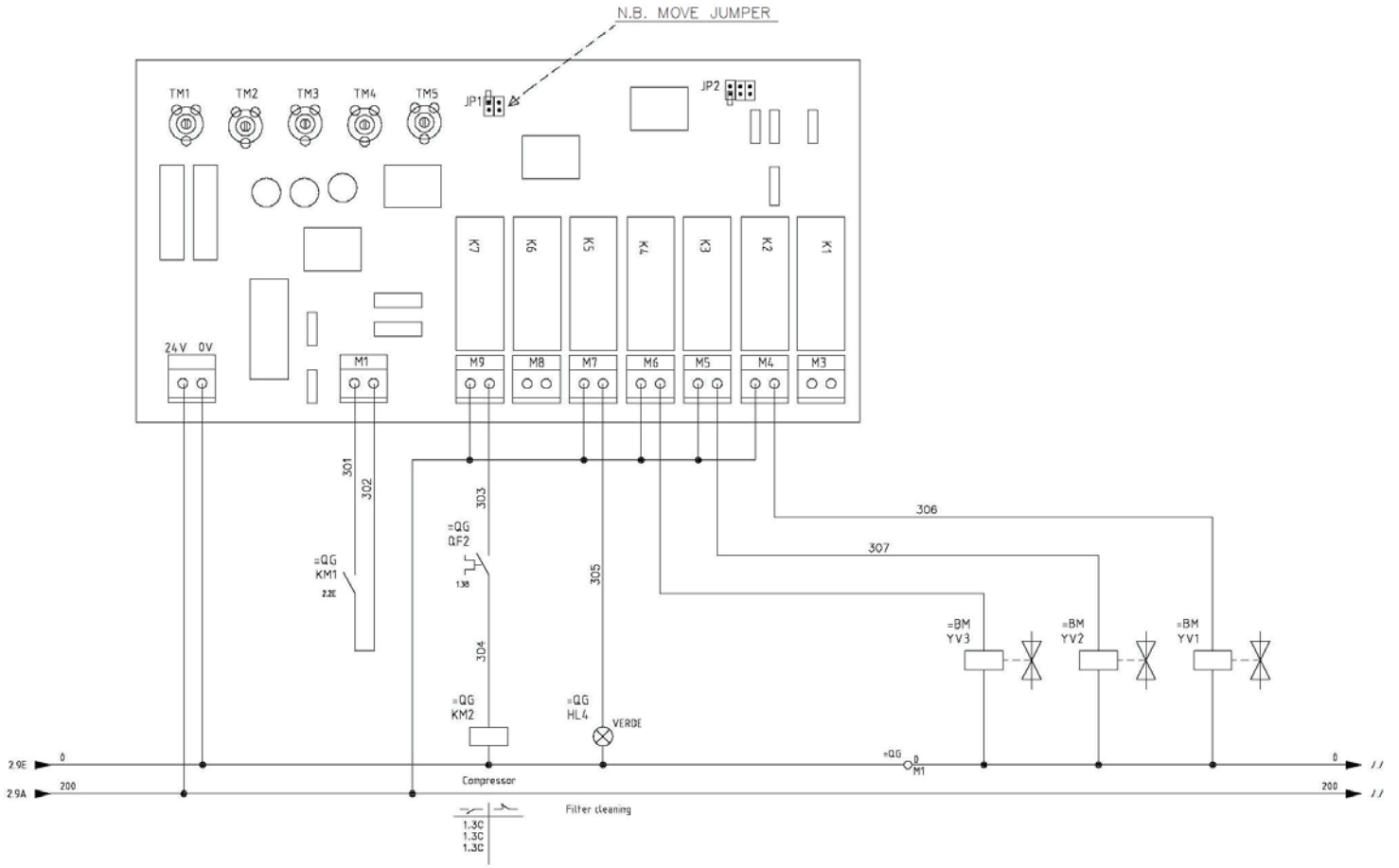


Contact Superabrasive:

Technical Support: (800) 987-8403 | www.superabrasive.com | info@superabrasive.us

ELECTRICAL DIAGRAMS

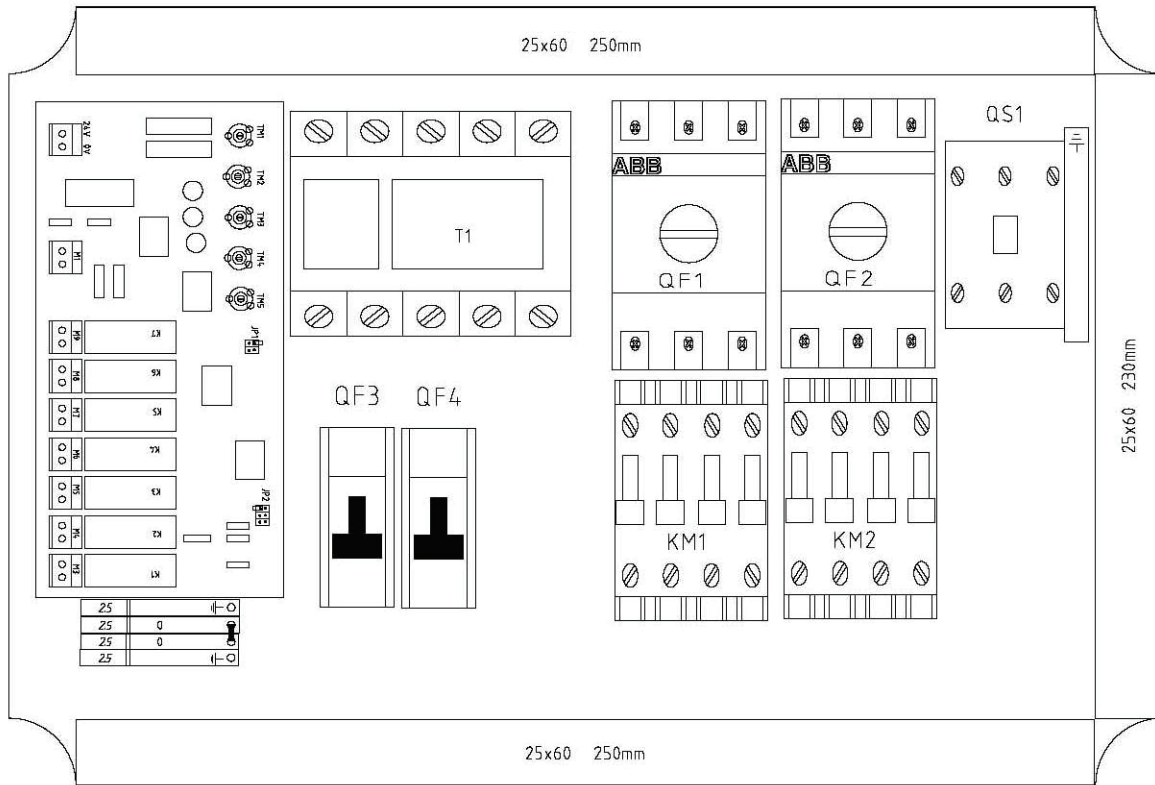
V-32-400, 400 Volt



Contact Superabrasive:

Technical Support: (800) 987-8403 | www.superabrasive.com | info@superabrasive.us

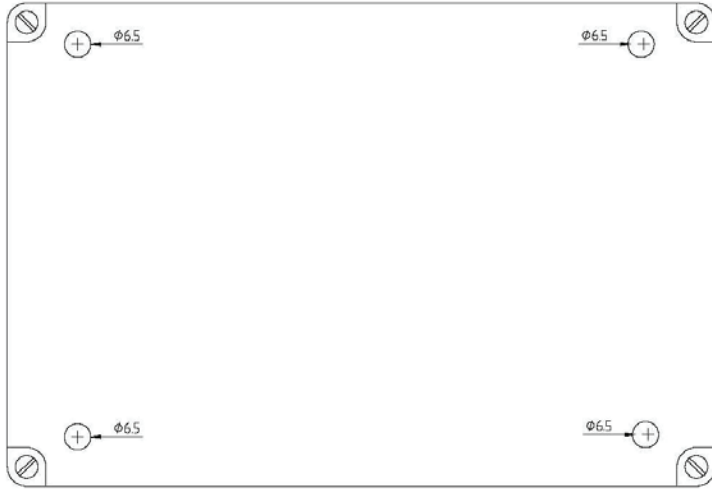
ELECTRICAL DIAGRAMS
V-32-400, 400 Volt



Contact Superabrasive:

Technical Support: (800) 987-8403 | www.superabrasive.com | info@superabrasive.us

ELECTRICAL DIAGRAMS V-32-400, 400 Volt



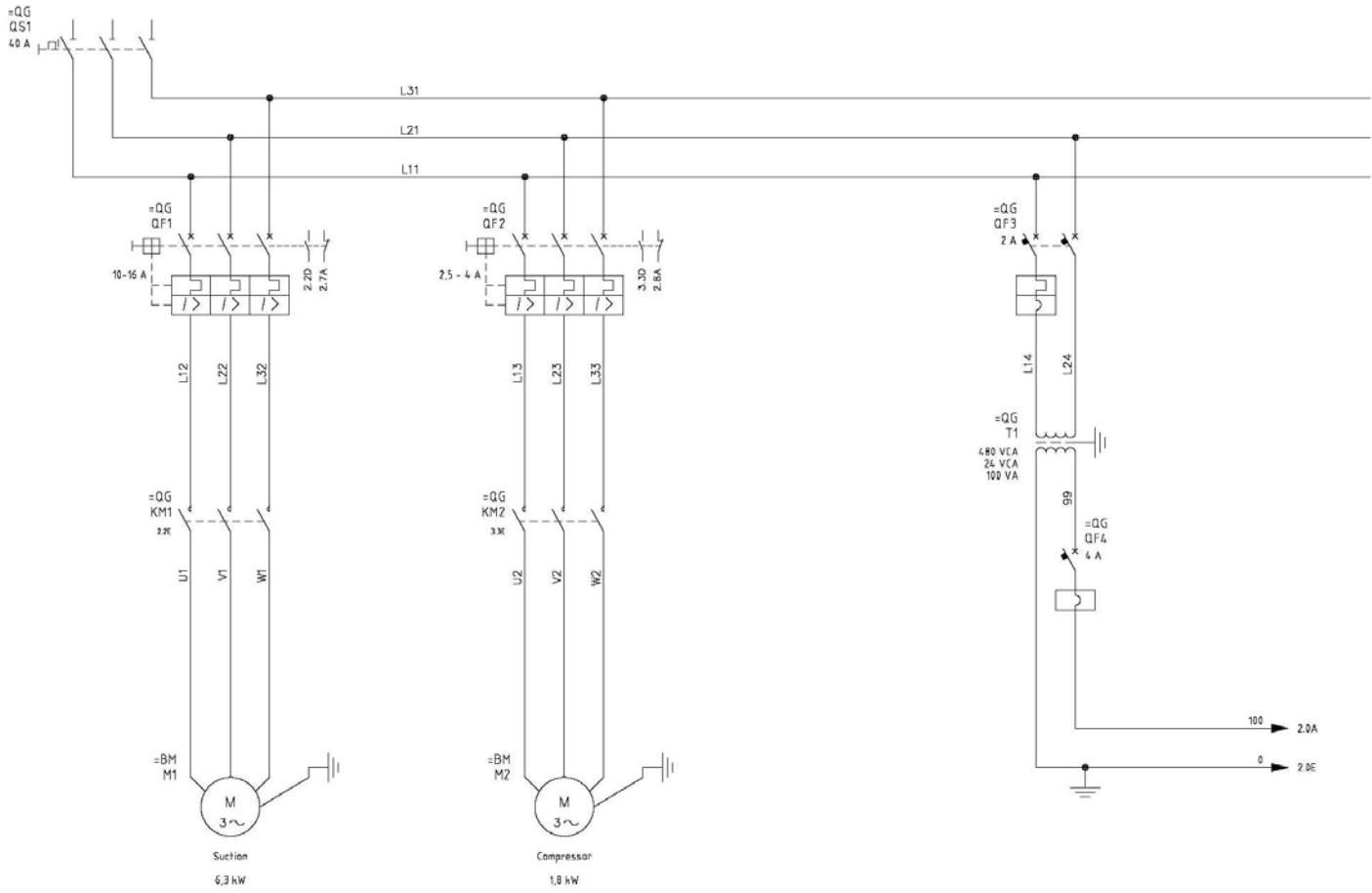
N° 4 BOLT 6MAx25 FOR ATTACHMENT ON THE PREPARED HOLES ON THE BOTTOM OF THE BOX.

Nome/Item	Tipo/Type	Descrizione/Description	Costruttore/Marke	Quadro/Board	Fg/Sh	Q.ta/Q.ty
HL1	ER 481 2	CL-502W LED INTEGRATO BIANCO 24VAC/CC	Abb	=QG	2	1
HL2	ER 478 8	CL-502G LED INTEGRATO VERDE 24VAC/CC	Abb	=QG	2	1
HL3	ER 479 6	CL-502Y LED INTEGRATO GIALLO 24VAC/CC	Abb	=QG	2	1
HL4	ER 478 8	CL-502G LED INTEGRATO VERDE 24VAC/CC	Abb	=QG	3	1
KM1	EN 080 6 EN 264 6	A16-30-10 24V/50-60HZ CONTATTORI SERIE A CA 5-10 CONTATTO AUSILIARE 1NA	Abb Abb	=QG	2	1 1
KM2	EN 611 8	A 8-30-10 24V/50-60HZ CONTATTORI SERIE	Abb	=QG	3	1
QF1	EP 091 1 EP 095 2	MS116 10-16A INTERRUTTORE SALVA MOTORE HKF1-11 CONTATTO AUSILIARE FRONTALE 1NA+1NC	Abb Abb	=QG	1	1 1
QF2	EP 088 7 EP 095 2	MS116 2,50-4,00A INTERRUTTORE SALVAMOTORE HKF1-11 CONTATTO AUSILIARE FRONTALE 1NA+1NC	Abb Abb	=QG	1	1 1
QF3	EE 550 8	S94 1N C 2 INTERRUTTORE AUTOMAT. 4,5KA 1P+N	Abb	=QG	1	1
QF4	EE 551 6	S94 1N C 4 INTERRUTTORE AUTOMAT. 4,5KA 1P+N	Abb	=QG	1	1
QG	GW44210	CASSETTA IP56 PARLISCE 380X300X120	Gewiss	=QG	4	1
QS1	EE 258 8 EE 313 1 EE 320 6	OT16F3 SEZIONATORE 16A OHYS2AJ MANIGLIA OX56X85 ALBERO 85MM	Abb Abb Abb	=QG	1	1 1 1
SB2	ER 001 8	CP1-10G-10 PULINS.VERDE G.PLAS.NERA 1NA	Abb	=QG	2	1
SB3	ER 014 1	CP1-10R-01 PULINS.ROSSO G.PLAS.NERA 1NC	Abb	=QG	2	1
SBE1	ER 694 0	CE4T-10R-01 EMER MONOBLOCCO ROTATIVO 1NC	Abb	=QG	2	1
T1	14 TRSMS10012F	Trasformatore 230-400/12-0-12V 100VA	Italweber	=QG	1	1

Contact Superabrasive:

Technical Support: (800) 987-8403 | www.superabrasive.com | info@superabrasive.us

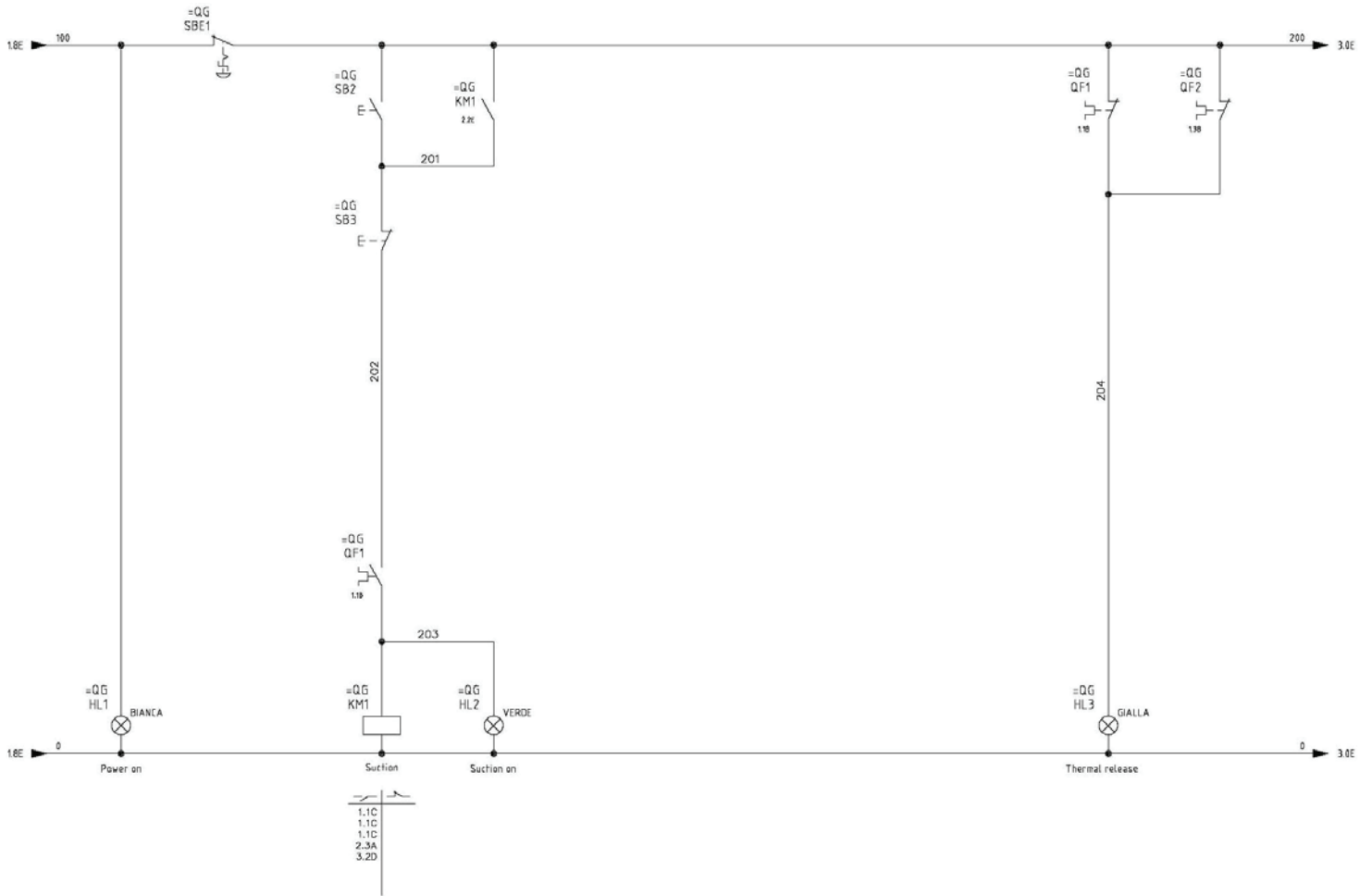
ELECTRICAL DIAGRAMS V-32-480, 480 Volt



Contact Superabrasive:

Technical Support: (800) 987-8403 | www.superabrasive.com | info@superabrasive.us

ELECTRICAL DIAGRAMS V-32-480, 480 Volt

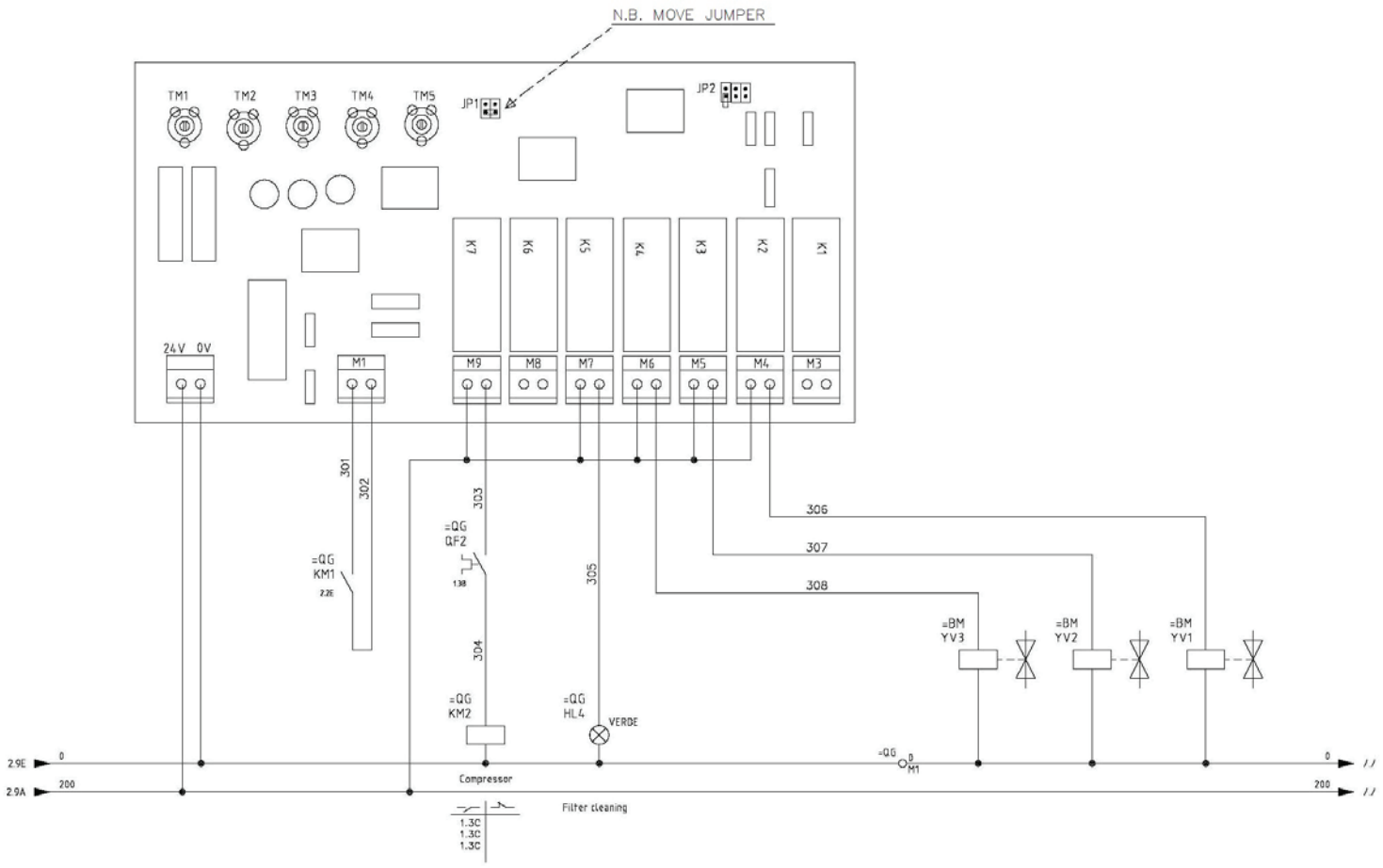


Contact Superabrasive:

Technical Support: (800) 987-8403 | www.superabrasive.com | info@superabrasive.us

ELECTRICAL DIAGRAMS

V-32-480, 480 Volt



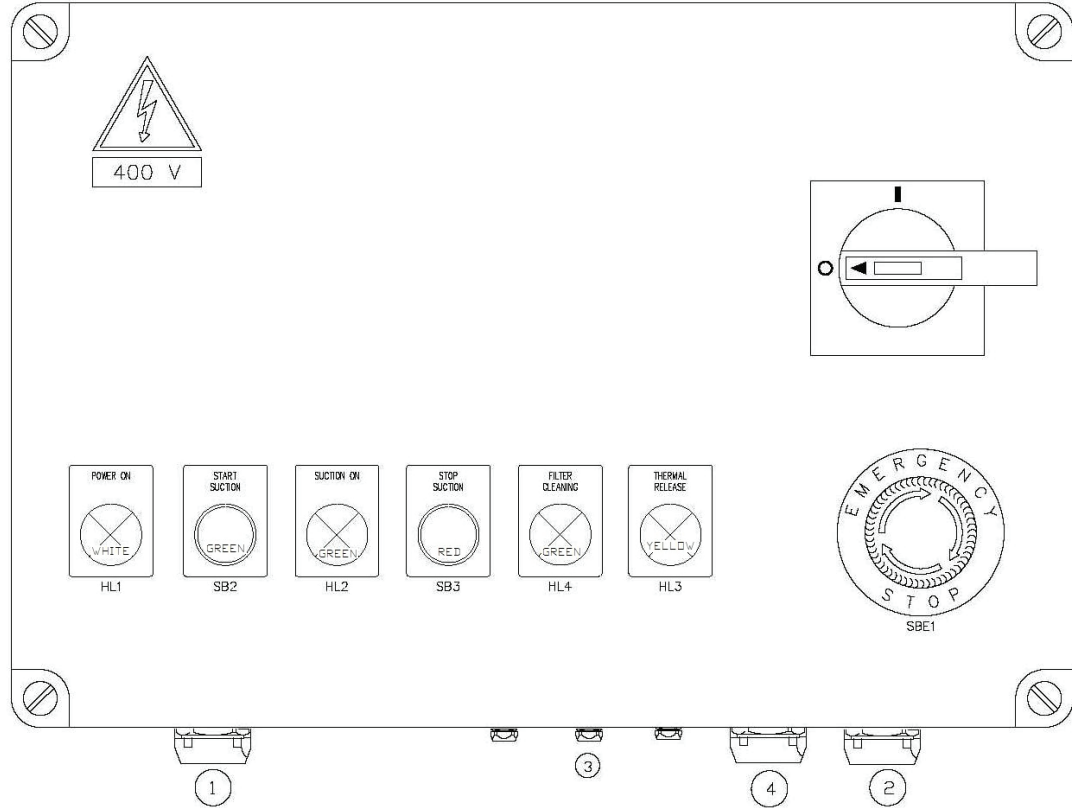
Contact Superabrasive:

Technical Support: (800) 987-8403 | www.superabrasive.com | info@superabrasive.us

ELECTRICAL DIAGRAMS V-32-480, 480 Volt

- 1-Power cable CVH07RNF 4G2,5 l=10,000 mm PG16
- 2-Vacuum motor cable CVH07RNF 4G2,5 l=2,300 mm PG16
- 3-Solenoid valve cables: "YV1-YV2-YV3" CVNPI100 2x0,5 l=1,300 mm PG9
- 4-Compressor cable CVH07RNF 4G1,5 l=1,300 mm PG16

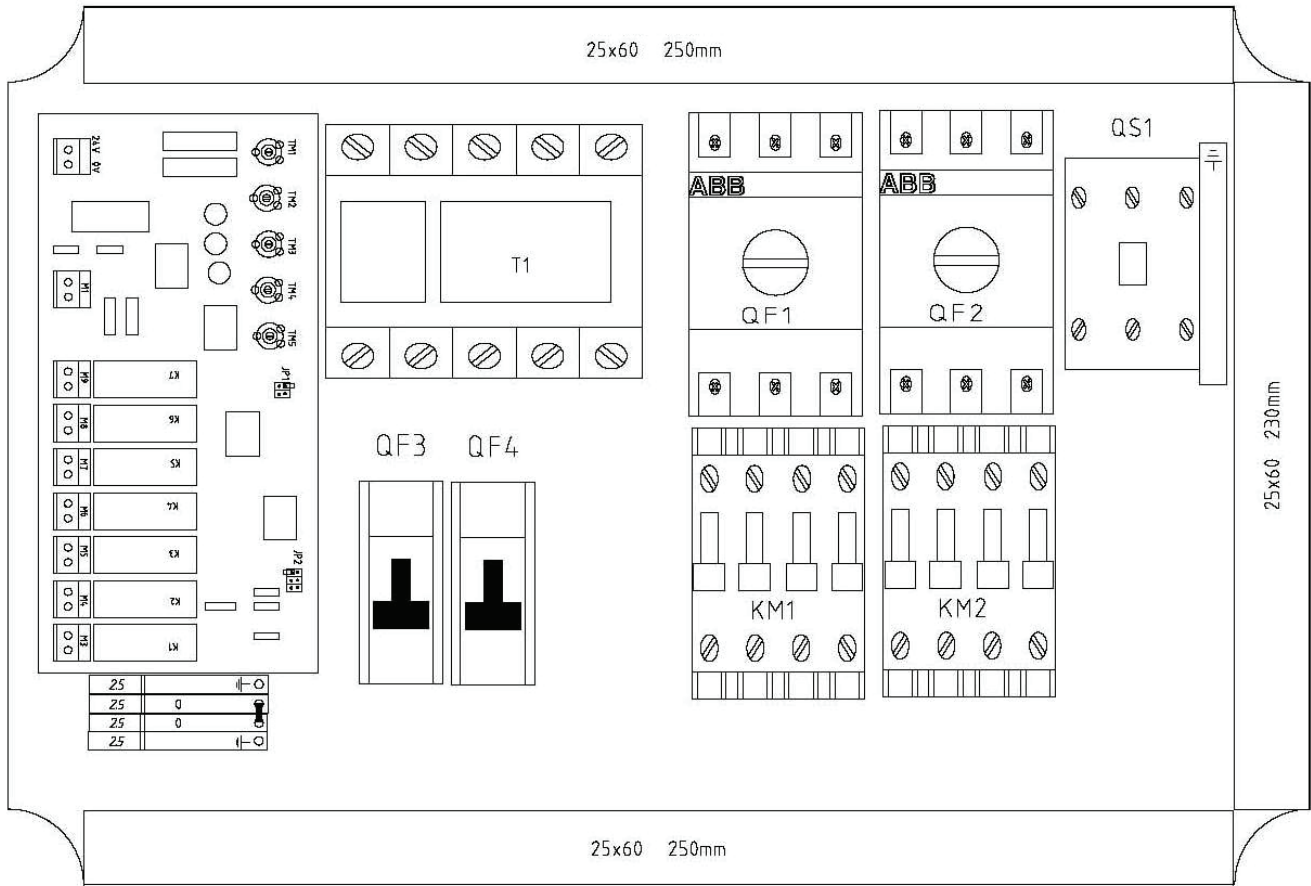
=QG
QG



Contact Superabrasive:

Technical Support: (800) 987-8403 | www.superabrasive.com | info@superabrasive.us

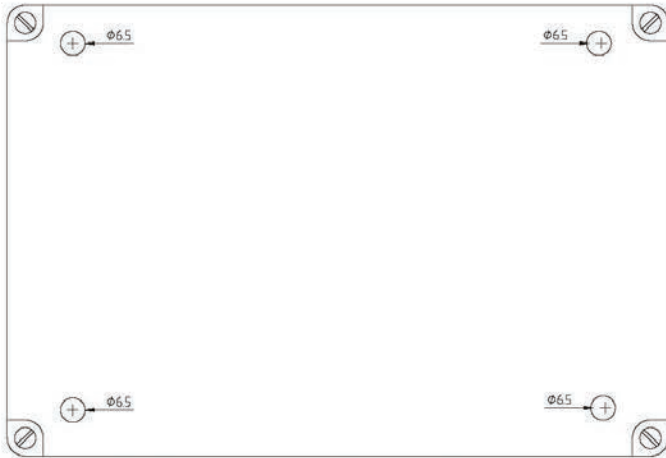
ELECTRICAL DIAGRAMS
V-32-480, 480 Volt



Contact Superabrasive:

Technical Support: (800) 987-8403 | www.superabrasive.com | info@superabrasive.us

ELECTRICAL DIAGRAMS V-32-480, 480 Volt



N° 4 BOLT 6Mx25 FOR ATTACHMENT ON THE
PREPARED HOLES ON THE BOTTOM OF THE BOX.

Nome/Item	Tipo/Type	Descrizione/Description	Costruttore/Marke	Quadro/Board	Fg/Sh	Q.ta/Q.ty
HL1	ER 481 2	CL-502W LED INTEGRATO BIANCO 24VAC/CC	Abb	=QG	2	1
HL2	ER 478 8	CL-502G LED INTEGRATO VERDE 24VAC/CC	Abb	=QG	2	1
HL3	ER 479 6	CL-502Y LED INTEGRATO GIALLO 24VAC/CC	Abb	=QG	2	1
HL4	ER 478 8	CL-502G LED INTEGRATO VERDE 24VAC/CC	Abb	=QG	3	1
KM1	EM 020 3	AS16-30-10 24V/50-60HZ CONTATTORI SERIE A	Abb	=QG	2	1
	EM 358 7	CA 3-10 CONTATTO AUSILIARE 1NA	Abb			
KM2	EM 000 5	AS09-30-10 24V/50-60HZ CONTATTORI SERIE	Abb	=QG	3	1
	EP 091 1	MS116 10-16A INTERRUTTORE SALVA MOTORE	Abb			
QF1	EP 095 2	HKF1-11 CONTATTO AUSILIARE FRONTALE 1NA+1NC	Abb	=QG	1	1
	EP 088 7	MS116 2,50-4,00A INTERRUTTORE SALVAMOTORE	Abb			
QF2	EP 095 2	HKF1-11 CONTATTO AUSILIARE FRONTALE 1NA+1NC	Abb	=QG	1	1
QF3	SN201LC2	S201 L C 2 INTERRUTTORE AUTOMAT. 4,5KA 1P+N	Abb	=QG	1	1
QF4	SN201LC4	S201 L C 4 INTERRUTTORE AUTOMAT. 4,5KA 1P+N	Abb	=QG	1	1
QG	GW44210	CASSETTA IP56 PARLISCE 380X300X120	Gewiss	=QG	4	1
QS1	EE 260 4	OT40F3 SEZIONATORE 16A	Abb	=QG	1	1
	EE 313 1	OHYSZAJ MANIGLIA	Abb			
	EE 320 6	OXS6X85 ALBERO 85MM	Abb			
SB2	ER 001 8	CP1-10G-10 PUL.INS.VERDE G.PLAS.NERA 1NA	Abb	=QG	2	1
SB3	ER 014 1	CP1-10R-01 PUL.INS.ROSSO G.PLAS.NERA 1NC	Abb	=QG	2	1
SBE1	ER 694 0	CE41-10R-01 EMER MONDBLOCCO ROTATIVO 1NC	Abb	=QG	2	1
T1	14TRSM510012F	Trasformatore 230-400/12-0-12V 100VA	Italweber	=QG	1	1

Contact Superabrasive:

Technical Support: (800) 987-8403 | www.superabrasive.com | info@superabrasive.us

WARRANTY AND RETURNS

WARRANTY POLICY FOR LAVINA® V-32

If your warranty card is missing, contact your local distributor and request a warranty card, or visit us at www.superabrasive.com to download one. The customer is responsible for filling out the card and mailing it to the manufacturer's address as indicated on the card. To ensure registration and activation of warranty coverage, the warranty card must be mailed to the manufacturer within 30 days from date of purchase; failure to do so may void the warranty. Be sure to provide the manufacturer with all of the information requested, and most importantly with the distributor's name, machine serial number, and purchase date.

Superabrasive offers a guarantee on LAVINA® vacuums, covering manufacturing and material defects, for a period of 24 months from the date of purchase, as invoiced by Superabrasive. The following conditions pertain to this warranty:

- Applies only to the original owner and is not transferable.
- Vacuum must not be dismantled and tampered with in any way.
- This warranty does not cover any failures or defects caused by normal wear and tear, accidental damage, damage during transport, improper handling, repairs conducted by an unauthorized facility (without prior authorization by Superabrasive), or operation that is not in compliance with the instructions provided in this manual. Superabrasive denies all responsibility for damages or injuries, to any persons or objects, caused by improper operation of the vacuum unit.
- This warranty will become invalid in the event that equipment or accessories used on/with the vacuum unit are not supplied or approved by Superabrasive.
- Covered components proven defective will be repaired or replaced at no charge.
- This warranty does not apply to any repair of/to of proprietary parts, nor does it cover cleaning or general maintenance.
- This warranty does not apply to items with aftermarket alterations, changes, or modifications.
- This warranty is limited to repair or replacement of covered components and reasonable labor expenses.
- In the event of a warranty claim, the vacuum unit must be returned to Superabrasive, or an authorized facility, for a warranty investigation, and subsequent warranty repair or replacement.
- All warranty returns must be shipped freight prepaid.
- This warranty is in lieu of and excludes every condition of warranty not herein expressly set out and all liability for any form of consequential loss or damage is hereby expressly excluded.

The above warranty conditions may be changed only by Superabrasive. Superabrasive reserves the right to inspect and make a final decision on any machine returned under this warranty. This warranty applies to new, used, and demo machines.

Superabrasive agrees to repair or replace, free of charge, any parts which have failed due to manufacturer or material defects. Repairs must only be performed at authorized service facilities that have been approved by Superabrasive. Shipping and handling fees associated with warranty claims must be pre-paid by the customer / claimant.

In the event that a warranty investigation determines that the damage or unit failure is not attributed to manufacturer or material defects, all costs associated with the repair of the vacuum will become the direct responsibility of the claimant. If payment is not rendered for such services, Superabrasive will assume ownership of the machine and any associated parts in possession.

Superabrasive does not authorize any person or representative to make any other warranty, or to assume for us any liability in connection with the sale and operation of our products.

The manufacturer is also not liable in the event that the customer fails to submit a Warranty Certificate, fails to follow manual instructions, uses non-original spare parts, or fails to service/clean the vacuum regularly and properly

RETURN POLICY FOR LAVINA® V32

LAVINA® Vacuums may be returned, subject to the following terms:

- Vacuums may not be returned to Superabrasive Inc. for credit or repair without prior authorization. Please contact Superabrasive Inc. or your local distributor for authorization and issuance of a return authorization number. This number along with the serial number of the vacuum must be included on all packages and correspondences. Vacuums returned without prior authorization will remain property of the sender and Superabrasive Inc. will not be responsible for these.
- No vacuums will be credited after 90 days from the date of Superabrasive's invoice.
- All returns must be shipped freight prepaid. All returns may be exchanged for other equipment or parts of equal dollar value. If vacuums are not exchanged, they are subject to a fifteen percent (15%) restocking fee.

Contact Superabrasive:

Technical Support: (800) 987-8403 | www.superabrasive.com | info@superabrasive.us

HANDLING, TRANSPORTATION, AND STORAGE

When handling and transporting the machine, never use the handles or other machine parts to lift the machine. Use always a skid or pallet for transportation, and never transport an unprotected machine in the rain or snow. Always store and transport the machine in an upright position. The machine should also always be stored in a dry, frost-proof environment.

CE-CERTIFICATION

All LAVINA® dust collectors are designed to operate correctly in an electromagnetic atmosphere of industrial type, and are equipped with all of the mechanical and electrical safety protections in conformity with the following European CEE rules and regulations:

LAVINA® Vacuums comply with the Safety Directive for machines 2006/42/EC, the EMC Directive 2004/108/EC and the Low Voltage Directive 2006/95/EC.

They also comply with the norms in use UNI EN 13857, CEI EN 60204-1, CEI EN 61000-3-2, CEI EN 61000-3-3, CEI EN 55014.

Test results are a part of the machine's technical information and can be provided upon request. The vacuum unit machine is delivered with the CE mark exposed and is provided with a EC declaration of conformity.

DISPOSAL

If your vacuum is no longer operational due to its age, or needs to be replaced, please send the machine back to Superabrasive or the nearest distributor. Therefore, it can be properly disposed of while fully complying with all local, environmental laws and regulations.

MANUFACTURER CONTACT INFORMATION

If you need to contact Superabrasive Inc. with any technical support questions, or general inquiries, please contact us using the information shown below:

USA

Address: 9411 Jackson Trail Road, Hoschton, GA 30548, USA
Email: info@superabrasive.us
Telephone: (706) 658-1122
Fax: (706) 658-0357
Website: www.superabrasive.com

EUROPE

Address: Rabotnicheska 2A, 6140 Krun, Bulgaria
Email: factory@superabrasive.com
Telephone: +359 431 64477
Fax: +359 431 64466
Website: www.superabrasive.com

Contact Superabrasive:

Technical Support: (800) 987-8403 | www.superabrasive.com | info@superabrasive.us